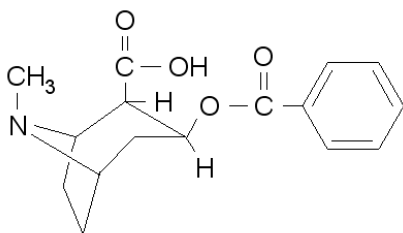


Product Information

Benzoyllecgonine solution 1.0 mg/mL \pm 5% in methanol drug standard

Catalog Number **B8900**
Lot Number 095K8804
Storage Temperature 2–8 °C

CAS RN 519-09-5
Synonyms: Ecgonine benzoate; 3-(Benzoyloxy)-8-methyl-8-azabicyclo[3.2.1]octane-2-carboxylic acid



Product Description

Molecular Formula: C₁₆H₁₉NO₄
Molecular Weight: 289.33

DEA Class: Exempt preparation of Class II

0.99 mg Benzoyllecgonine/mL GC grade Methanol, concentration verified by UV.

Expiration Date: December 2008

Precautions and Disclaimer

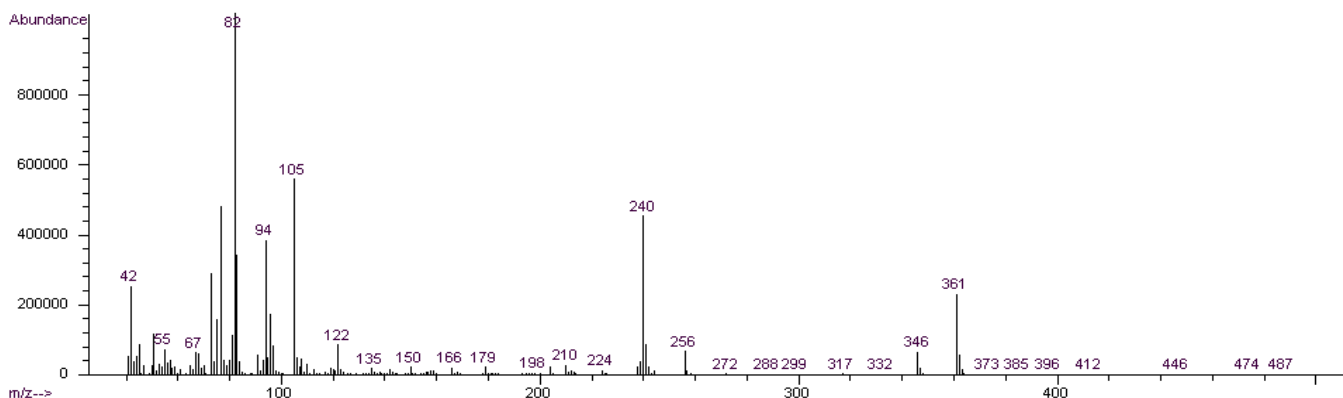
This product is for R&D use only, not for drug, household, or other uses. Please consult the Material Safety Data Sheet for information regarding hazards and safe handling practices.

Storage/Stability

If stored at 2–8 °C in an airtight container, protected from light, decomposition of the product is less than 1% in 24 months. After opening, concentration may change due to loss of solvent.

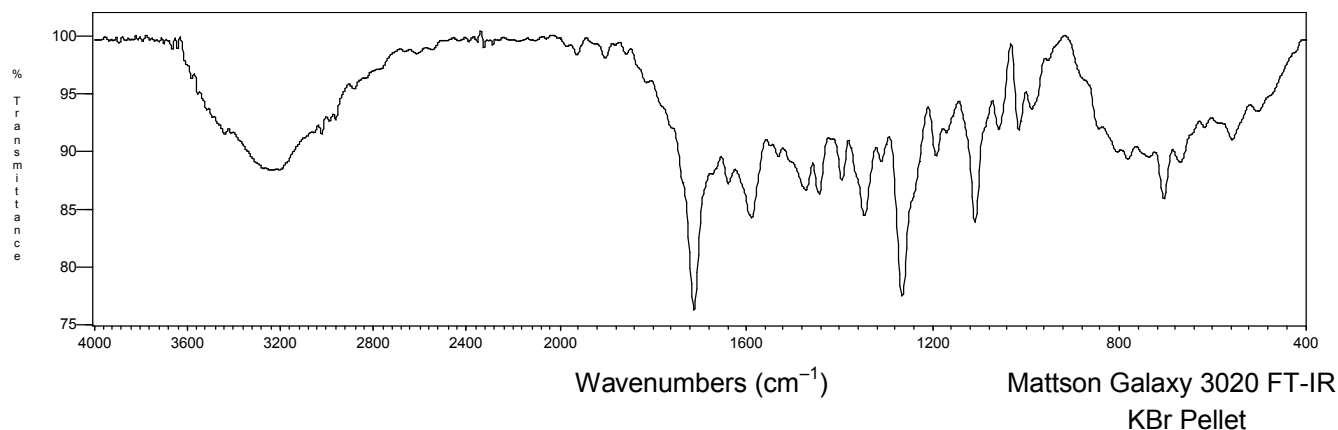
PCS,MAM 03/07-1

70 eV Electron Ionization Mass Spectrum



Hewlett-Packard 5890 Series II Gas Chromatograph
Hewlett-Packard 5971 Mass Selective Detector
Hewlett-Packard G1034C MS ChemStation (HP-DOS series)

FT-IR

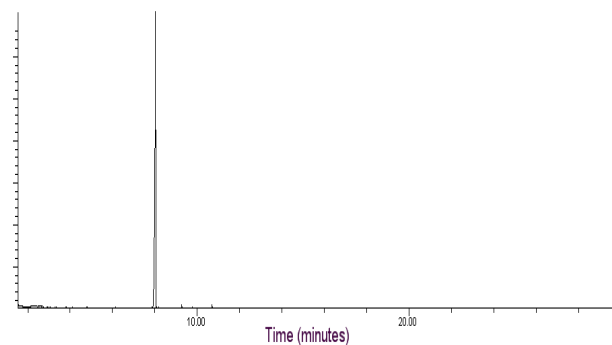
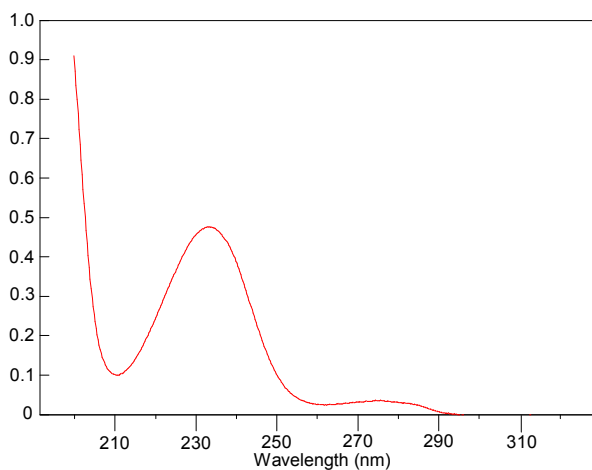


Ultraviolet Spectrum

Peak	233.5 nm
Absorbance	0.472
Solvent	0.2 N H ₂ SO ₄
Dilution	1:99 (v/v)

Capillary Gas Chromatography

Column Supelco SPB-1 (Catalog Number 24162)
I.D. 0.20 mm **Length** 15 m **Film Thickness** 0.20 μm
Oven Temperature 150 °C (2 minutes), then
15 °C/minute to 300 °C, hold 18 minutes
Injector Temperature 250 °C, Splitless
Detector Hewlett-Packard 5971
Mass Selective Detector (70 eV, 40-500 m/z)



Sigma brand products are sold through Sigma-Aldrich, Inc.

Sigma-Aldrich, Inc. warrants that its products conform to the information contained in this and other Sigma-Aldrich publications. Purchaser must determine the suitability of the product(s) for their particular use. Additional terms and conditions may apply. Please see reverse side of the invoice or packing slip.