

RABBIT ANTI- C-C CHEMOKINE RECEPTOR 5 (CCR5) N-TERMINUS POLYCLONAL ANTIBODY

CATALOG NUMBER: AB1889

LOT NUMBER:

QUANTITY: 100 µg

CONCENTRATION: 1 mg/mL

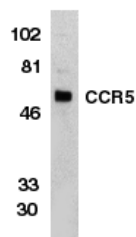
BACKGROUND: HIV and related viruses require coreceptors, in addition to CD4, to infect target cells. Some G-protein-coupled receptors including CCR5, CXCR4, CCR3, CCR2b and CCR8 in the chemokine receptor family, and four new human molecules GPR15, STRL33, GPR1 and V28 were recently identified as HIV coreceptors (1,2). Among them, CCR5 is a principle coreceptor for macrophage- and dual-tropic HIV-1 strains fusion of entry of human white blood cells (3,4). The amino-terminal domain and the extracellular loops of CCR5 serve as HIV binding sites. CCR5 messenger RNA is expressed in lymphoid organs and monocytes.

SPECIFICITY: Specific for human C-C Chemokine Receptor 5 (CCR5) at the N-terminus.

IMMUNOGEN: Synthetic peptide from the N-terminal domain of human CCR5.

APPLICATIONS: Western blot: 1:1000 – 1:2000 (THP-1 whole cell lysate can be used as a positive control)
Optimal working dilutions must be determined by end user.

SPECIES REACTIVITIES: Human



Western blot
analysis of CCR5 in
THP-1 whole cell
lysate with anti-
CCR5 (NT) at
1:1000 dilution.
Representative lot
data.

FORMAT: Purified immunoglobulin

PRESENTATION: Liquid containing PBS containing 0.02% sodium azide.

STORAGE/HANDLING: Store at 2-8°C for up to 12 months.

RELATED REFERENCES:

1. Dimitrov, DS. (1997). *Cell*. **91**:721-730.
2. Littman, DR. (1998). *Cell*. **93**:677-680.
3. Deng, H. et al. (1996). *Nature*. **381**:661-666.
4. Dragic, T. et al. (1996). *Nature*. **381**:667-673.



Important Note: *During shipment, small volumes of product will occasionally become entrapped in the seal of the product vial. For products with volumes of 200 μ L or less, we recommend gently tapping the vial on a hard surface or briefly centrifuging the vial in a tabletop centrifuge to dislodge any liquid in the container's cap.*

**FOR RESEARCH USE ONLY; NOT FOR USE IN DIAGNOSTIC
PROCEDURES. NOT FOR HUMAN OR ANIMAL CONSUMPTION**

Unless otherwise stated in our catalog or other company documentation accompanying the product(s), our products are intended for research use only and are not to be used for any other purpose, which includes but is not limited to, unauthorized commercial uses, in vitro diagnostic uses, ex vivo or in vivo therapeutic uses or any type of consumption or application to humans or animals.

©2002 - 2011: Millipore Corporation. All rights reserved. No part of these works may be reproduced in any form without permission in writing.

28820 Single Oak Drive • Temecula, CA 92590
Technical Support: T: 1-800-MILLIPORE (1-800-645-5476) • F: 1-800-437-7502
www.millipore.com