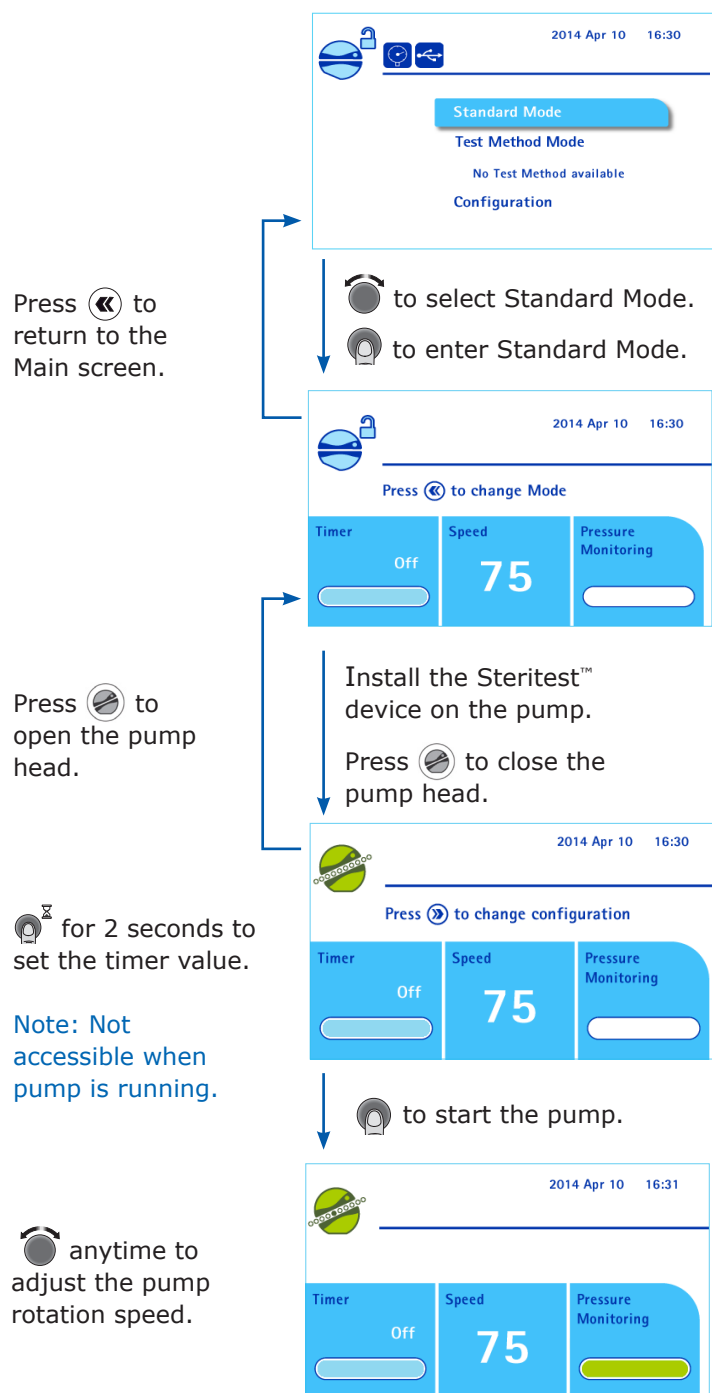


# Steritest™ Symbio Pump User Interface Quick Guide

## Using Standard Mode



### Using the Timer Function

The pump automatically stops at the end of the preset value.

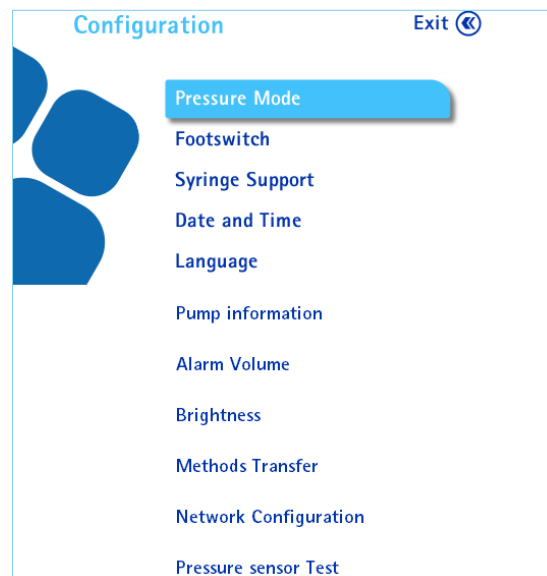


**Note:** Press to stop the pump before the end of the preset value.

### Without the Timer Function

Press to stop the pump.

## Configuring the Pump



## Pressure Monitoring Mode

Pressure level in Steritest™ canisters is represented by a color bar.



**Green:** Normal pressure



**Orange:** High pressure



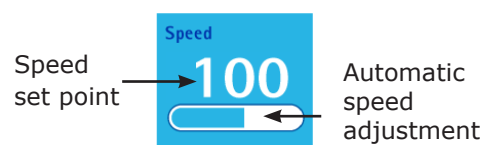
**Red:** Over pressure

It is recommended to stop the pump.

## Pressure Regulation Mode

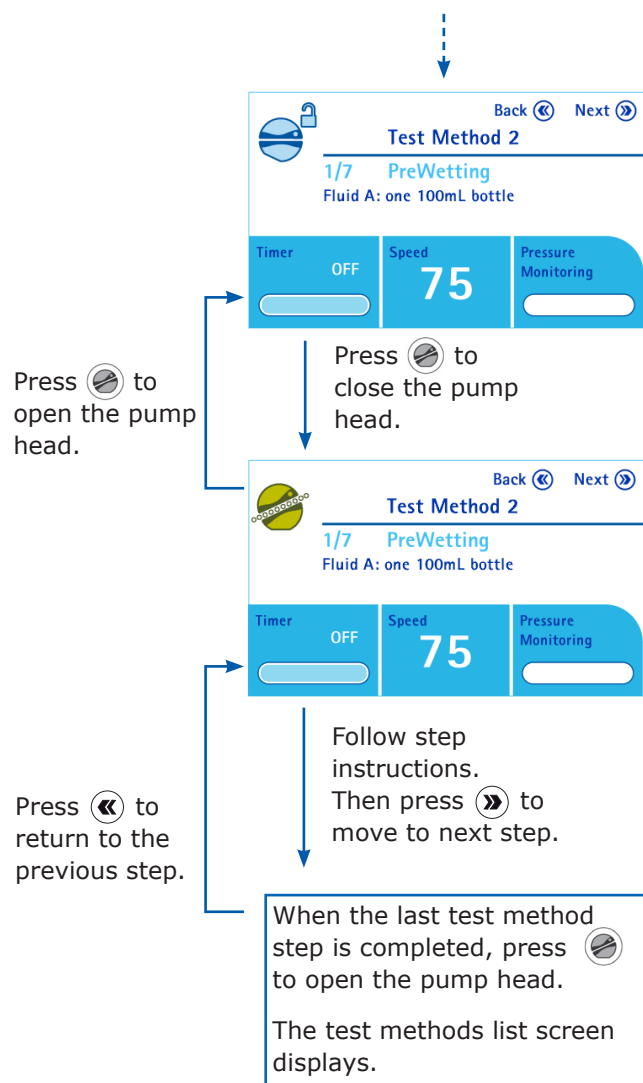
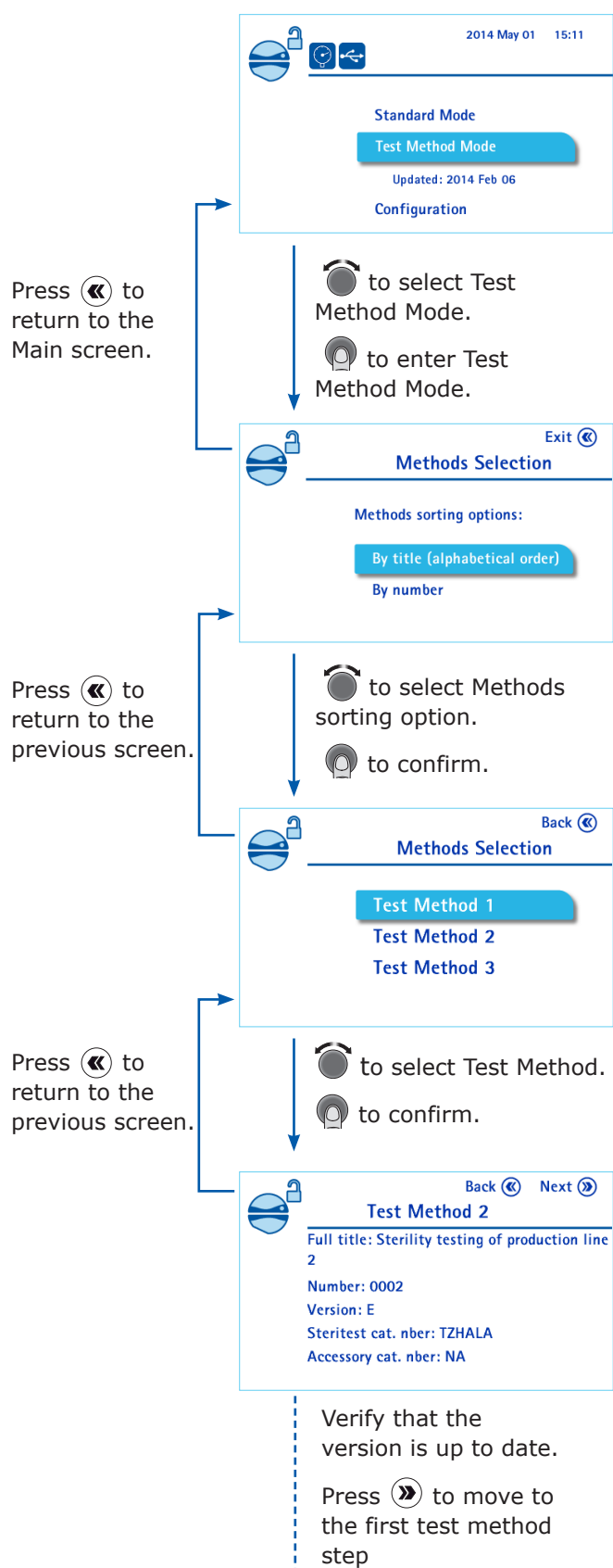
**Note:** Not compatible with timer function and syringe support accessory.

Identical to Pressure Monitoring Mode plus automatic speed reduction to decrease the pressure in the canister.



## Using Test Method Mode

Note: This mode is accessible only if test methods have been previously loaded onto the pump using Steritest™ Symbio Software.



### Filtration parameters management in Test Method Mode

Filtration parameters are predefined in Test Method Mode.

Pump rotation speed adjustment

⏮ to adjust pump rotation speed.

Timer settings adjustment

Predefined timer value cannot be modified.

⏮ to stop the pump before the end of timer value.

Pressure mode

Predefined pressure mode cannot be modified. See Using Standard Mode on the other side of this quick guide.

Note : To download the complete Steritest™ Symbio Pump User Guide, go to [www.Millipore/steritest-symbio](http://www.Millipore/steritest-symbio).

© 2019 Merck KGaA, Darmstadt, Germany, and/or its affiliates. All rights reserved.

Merck, Millipore, Sigma-Aldrich and Steritest are trademarks of Merck KGaA, Darmstadt, Germany, or its affiliates. All other trademarks are the property of their respective owners. Detailed information on trademarks is available via publicly accessible resources. PF16602 Version 3.0 05/2019

The life science business of Merck operates as MilliporeSigma in the U.S. and Canada

