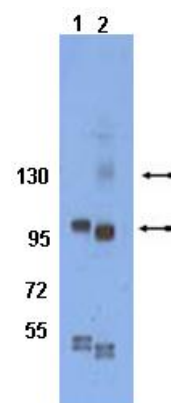


RABBIT ANTI-PHOSPHO INTEGRIN B1 (Tyr783) POLYCLONAL ANTIBODY

CATALOG NUMBER:	AB8125	QUANTITY:	100 µL
LOT NUMBER:		HOST/ISOTYPE:	Rabbit
SPECIFICITY:	Integrin B1 phosphorylated on Tyr783		
IMMUNOGEN:	C-terminal Peptide		
APPLICATIONS:	<p><u>Western Blot Analysis:</u> Western Blot Analysis of 293T cell lysate detected Phospho Integrin B1 at a concentration range of 1:1,000-1:5,000. Cells were treated without (lane 1) and with (lane 2) Provanadate. Arrows indicates expected bands at 120 kDa and 95 kDa (deglycosylated form).</p>		
	Optimal working dilutions must be determined by the end user.		
SPECIES REACTIVITY:	Human		
FORMAT:	Raw Rabbit Serum		
PRESENTATION:	Raw Rabbit Serum with 0.1% Sodium Azide		
STORAGE/HANDLING:	Maintain at 2-8°C for up to 12 months from date of receipt.		
REFERENCES:	<p>Kim SM, et al J Biol Chem. 2004 Feb 20;279(8):7082-90 Pinkse GG, et al J Hepatol. 2005 Jan;42(1):87-93</p>		



Important Note: During shipment, small volumes of product will occasionally become entrapped in the seal of the product vial. For products with volumes of 200 µL or less, we recommend gently tapping the vial on a hard surface or briefly centrifuging the vial in a tabletop centrifuge to dislodge any liquid in the container's cap.

For research use only; not for use as a diagnostic.