

Data Sheet

BT-RMS Brain-tropic RET Melanoma-sorted Mouse Cell Line

SCC465

Pack Size: $\geq 1 \times 10^6$ viable cells/vial**Store in liquid nitrogen.****FOR RESEARCH USE ONLY****Not for use in diagnostic procedures. Not for human or animal consumption.**

Background

The mouse brain-tropic Ret-melanoma sorted (BT-RMS) cell line is a derivative of the Ret-melanoma sorted cell line (RMS, Cat. No. SCC462). The RMS parental cells were isolated from a spontaneously occurring skin tumor in Ret transgenic mice. The RET oncogene was originally created by an accidental *in vivo* recombination of two human genes, Ret and RFP (the Ret-finger protein then, known today as TRIM27), during a transformation of the NIH3T3 cells with human lymphoma DNA.¹ The founder Ret transgenic mouse strains were generated by the embryonic microinjection of the RFP-Ret oncogene under the mouse metallothionein-I promoter-enhancer², and a spontaneous metastatic melanoma model line was established by repetitive rounds of back-crossing of one of such founders.³ The parental mouse Ret-melanoma sorted (RMS) cell line (Cat. No. SCC462), was created by engineering the isolated Ret-melanoma cells to express the fluorescent reporter gene mCherry by retroviral transduction and selecting for its high expression by FACS.⁴

The brain-tropic Ret-melanoma (BT-RMS) cell line, was generated by two rounds of serial isolation from the brain metastasis following the intracardiac injection of the RMS cells.⁴ The BT-RMS cells were reported to exhibit an increased incidence of brain metastasis and a shortened timeline from subdermal injection to the formation of spontaneous brain metastasis.⁴

Like the parental RMS line, BT-RMS cells express mCherry and are puromycin resistant. In addition to the common melanoma markers, such as PMEL and Melan-A, BT-RMS also expresses the chemokine receptor CXCR3, thought to be crucial for its ability to metastasize to the brain.

Source

BT-RMS cells were derived from the brain tumors that formed upon the intracardiac injection of the Ret-melanoma sorted cells (RMS), which in turn were derived from the spontaneous metastatic skin tumors in Ret-transgenic mice. The founder transgenic mice were created by microinjection of the Ret transgene into the fertilized egg of (C57BL/6 x BALB/c) x BALB/c mice.² One such founder was crossed with BCF1 (BALB/c x C57BL/6) mice to establish a transgenic line, designated "the 304 line." When these F1 transgenic mice were subsequently crossed with C57BL/6 mice (coat color: black), BCF1 mice (agouti), and BALB/c mice (albino), benign melanocytic tumors often developed spontaneously in the pigmented F2 offspring but did not progress to metastatic tumors.² The spontaneous metastatic melanoma model (designated the 304/B6 line), in which the parent of the SCC462 cells arose, was generated by 10 rounds of back-crossing of the 304 line with C57BL/6 mice.³

Short Tandem Repeat

M18-3: 15,16	M1-2: 20	M8-1: 16,17	M11-2: 16,17	MX-1: 28
M4-2: 20.3,21.3	M7-1: 26.2	M2-1: 16	M17-2: 15,16,17	M13-1: 17,18
M6-7: 15	M1-1: 17,18	M15-3: 21.3,23.3	M12-1: 17,18	
M19-2: 13	M3-2: 14,15	M6-4: 18,19	M5-5: 16,19	

Quality Control Testing

- BT-RMS cells are verified to be of mouse origin and negative for human, rat, Chinese hamster, Golden Syrian hamster, and non-human primate interspecies contamination, as assessed by a Contamination Clear panel by Charles River Animal Diagnostic Services.
- Cells tested negative for infectious diseases against a Mouse Essential CLEAR panel by Charles River Animal Diagnostic Services.
- Cells tested negative for mycoplasma.

Storage and Handling

BT-RMS cells should be stored in liquid nitrogen until use. The cells can be cultured for at least 10 passages after initial thawing without significantly affecting the cell marker expression and functionality.

Representative Data

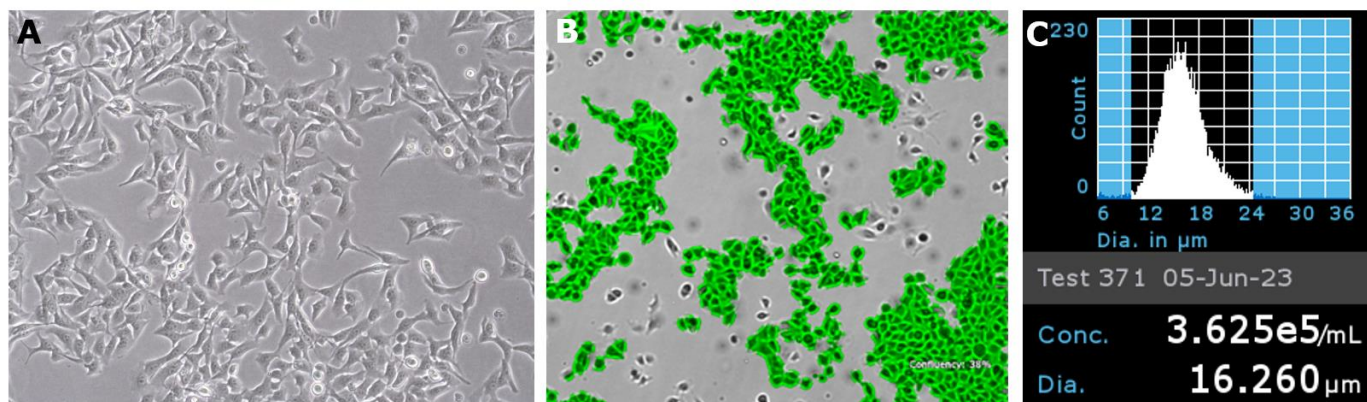


Figure 1. Bright-field image of BT-RMS cells a day after thaw in a T75 flask (**A**). Cell confluency was assessed throughout the culture using the Millicell® Digital Cell Imager (**B**, Cat. No. MDCI10000). Cell counting was performed using Scepter™ 3.0 handheld automated cell counter using 60 μm sensors (**C**, Cat. No. PHCC360KIT).

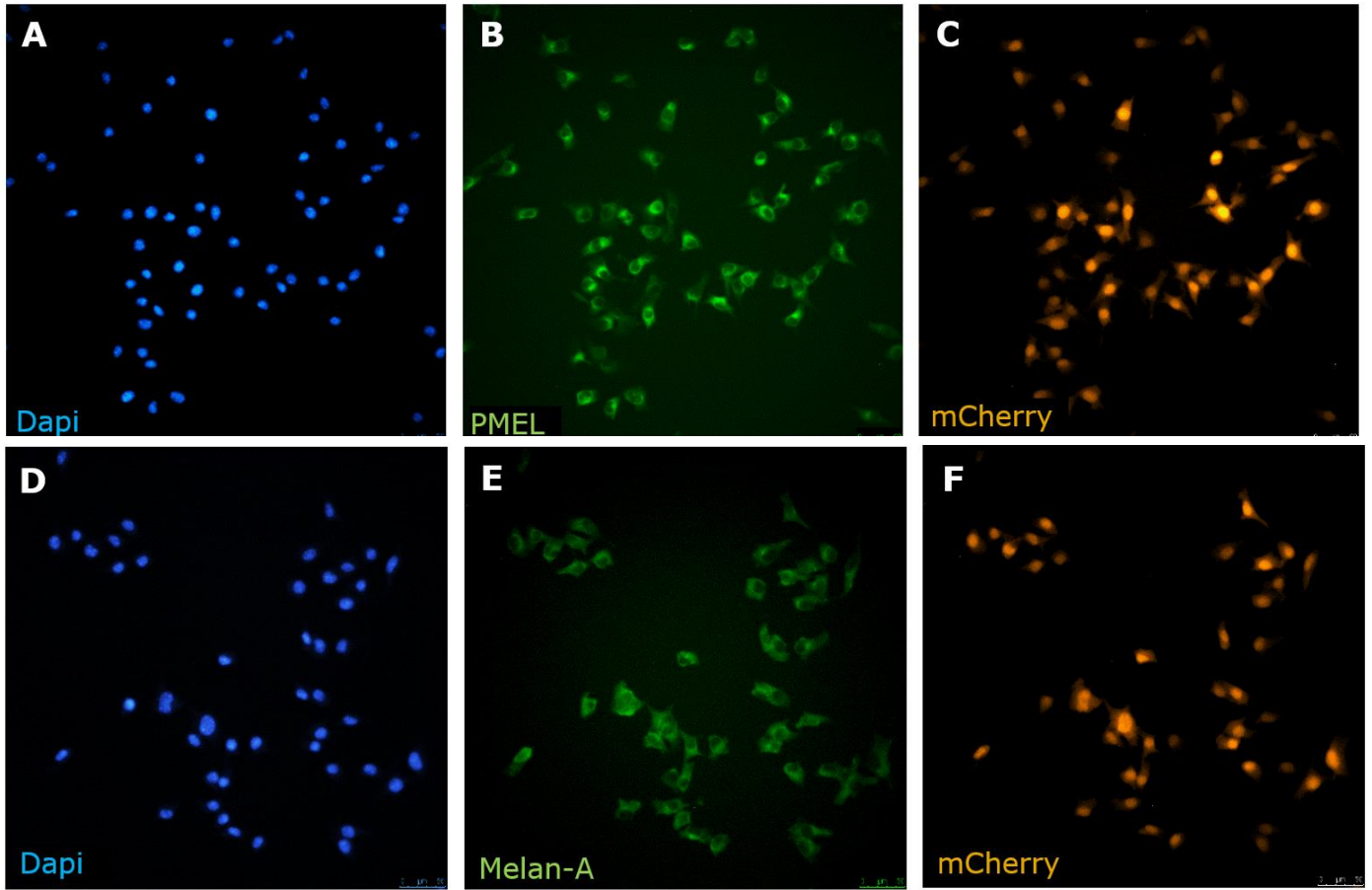


Figure 2. BT-RMS cells express mCherry and the melanoma markers, PMEL and Melan-A. BT-RMS cells labeled with DAPI (**A**, **D**, Cat. No. MBD0015), anti-PMEL antibody (**B**, Thermo Fisher PA5101023), anti-Melan-A antibody (**E**, Thermo Fisher PA599174), and imaged for mCherry expression (**C**, **F**).

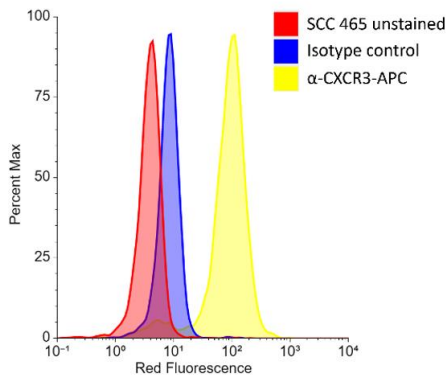


Figure 3. Analysis of the CXCR3 expression in BT-RMS cells. Cells were either unstained (red), stained with anti-CXCR3-APC antibodies (yellow, R&D Systems® FAB1685A), or stained with the isotype control antibody (blue, R&D Systems® IC006A). Histograms were obtained by Guava™ 3HT flow cytometer.

Protocols

BT-RMS cells proliferate rapidly. We recommend thawing in a T175 flask. Either Accutase® or trypsin can be used to detach the cells.

Thawing the Cells

1. Do not thaw the cells until the recommended medium is on hand. Cells can grow on standard tissue cultureware surfaces without any additional coating.
BT-RMS cells are thawed and expanded in BT-RMS Expansion Medium comprising of RPMI 1640 (Cat. No. R0883) containing 10% FBS (Cat. No. ES-009-B), 2 mM L-Glutamine (Cat. No. G8541), 1 mM sodium pyruvate (Cat. No. S8636), and 2 µg/mL puromycin (Cat. No., P4512), with optional Penicillin/Streptomycin (Cat. No. P4333).
2. Remove the vial of frozen cells from liquid nitrogen and incubate in a 37 °C water bath. Closely monitor until the cells are completely thawed. Maximum cell viability is dependent on the rapid and complete thawing of frozen cells.
IMPORTANT: Do not vortex the cells.
3. As soon as the cells are completely thawed, disinfect the outside of the vial with 70% ethanol. Proceed immediately to the next step.
4. In a laminar flow hood, use a 1- or 2-mL pipette to transfer the cells to a sterile 15 mL conical tube. Be careful not to introduce any bubbles during the transfer process.
5. Using a 10 mL pipette, slowly add dropwise 4 mL of BT-RMS Expansion Medium (medium composition in Step 1) to the 15 mL conical tube.
IMPORTANT: Do not add the entire volume of media all at once to the cells. This may result in decreased cell viability due to osmotic shock.
6. Gently mix the cell suspension by slowly pipetting up and down twice. Be careful not to introduce any bubbles.
IMPORTANT: Do not vortex the cells.
7. Centrifuge the tube at 300 x *g* for 5 minutes to pellet the cells.
8. Decant as much of the supernatant as possible. Steps 5-8 are necessary to remove residual cryopreservative (DMSO).
9. Resuspend the cells in 40 mL of BT-RMS Expansion Medium.
10. Transfer the cell mixture to a T175 tissue culture flask.
11. Incubate the cells at 37 °C in a humidified incubator with 5% CO₂.

Subculturing the Cells

1. BT-RMS cells can be passaged at ~80-85% confluency.
2. Carefully remove the medium from the T175 tissue culture flask containing the 80-85% confluent layer of cells.
3. Rinse the flask with 30-40 mL 1X sterile PBS (Cat. No. TMS-012-A). Aspirate after the rinse.
4. Apply 10 mL of pre-warmed Accutase® (Cat. No. A6964) and incubate in a 37 °C incubator for 5-7 minutes. Alternatively, you can use 0.25% Trypsin-EDTA pre warmed to 37 °C (Cat. No. SM-2003-C).
5. Inspect the flask and ensure the complete detachment of cells by gently tapping the side of the flask with the palm of your hand.
6. Add 10-15 mL of BT-RMS Expansion Medium to the plate.
7. Gently rotate the flask to mix the cell suspension. Transfer the dissociated cells to a 50 mL conical tube.
8. Centrifuge the tube at 300 x *g* for 5 minutes to pellet the cells.
9. Discard the supernatant, then loosen the cell pellet by tapping the tip of the tube with a finger.
10. Apply 2-5 mL of BT-RMS expansion medium to the conical tube and resuspend the cells thoroughly. Large cell clumps may be broken up by gentle trituration.
IMPORTANT: Do not vortex the cells.
11. Count the number of cells using a hemocytometer or a Scepter™ 3.0 handheld automated cell counter.
12. Plate the cells to the desired density. Typical split ratio is 1:10.

Cryopreservation of the Cells

BT-RMS cells may be frozen in SCC465 Expansion Medium supplemented with 10% DMSO using a Nalgene® slow freeze Mr. Frosty™ container.

References

1. Takahashi M, Ritz J, Cooper GM. 1985. Activation of a novel human transforming gene, ret, by DNA rearrangement. *Cell*. 42(2): 581-588.
2. Iwamoto T, Takahashi M, Ito M, Hamatani K, Ohbayashi M, Wajjwalku W, Isobe K, Nakashima I. 1991. Aberrant melanogenesis and melanocytic tumour development in transgenic mice that carry a metallothionein/ret fusion gene. *EMBO J*. 10(11): 3167-3175.
3. Kato M, Takahashi M, Akhand AA, Liu W, Dai Y, Shimizu S, Iwamoto T, Suzuki H, Nakashima I. 1998. Transgenic mouse model for skin malignant melanoma. *Oncogene*. 17(14): 1885-1888.
4. Schwartz H, Blacher E, Amer M, Livneh N, Abramovitz L, Klein A, Ben-Shushan D, Soffer S, Blazquez R, Barrantes-Freer A, et al. 2016. Incipient melanoma brain metastases instigate astrogliosis and neuroinflammation. *Cancer Res*. 76(15):4359-4371.

Academic Use Agreement

Subject to local law

THIS PRODUCT MAY ONLY BE USED BY INDIVIDUALS EMPLOYED BY AN ACADEMIC INSTITUTION AND IS INTENDED SOLELY TO BE USED FOR ACADEMIC RESEARCH, WHICH IS FURTHER DEFINED BELOW. BY OPENING THIS PRODUCT, YOU ("PURCHASER") HEREBY REPRESENT THAT YOU HAVE THE RIGHT AND AUTHORITY TO LEGALLY BIND YOURSELF AND/OR YOUR EMPLOYER INSTITUTION, AS APPLICABLE, AND CONSENT TO BE LEGALLY BOUND BY THE TERMS OF THIS ACADEMIC USE AGREEMENT. IF YOU DO NOT AGREE TO COMPLY WITH THESE TERMS, YOU MAY NOT OPEN OR USE THE PRODUCT AND YOU MUST CALL CUSTOMER SERVICE (1-800-645-5476) TO ARRANGE TO RETURN THE PRODUCT FOR A REFUND.

"Product" means BT-RMS Brain-tropic RET Melanoma-sorted Mouse Cell Line (SCC465).

"Academic Research" means any internal in vitro research use by individuals employed by an academic institution. Academic Research specifically excludes the following uses of whatever kind or nature:

- Re-engineering or copying the Product
- Making derivatives, modifications, or functional equivalents of the Product
- Obtaining patents or other intellectual property rights claiming use of the Product
- Using the Product in the development, testing, or manufacture of a Commercial Product
- Using the Product as a component of a Commercial Product
- Reselling or licensing the Product
- Using the Product in clinical or therapeutic applications including producing materials for clinical trials
- Administering the Product to humans
- Using the Product in collaboration with a commercial or non-academic entity

"Commercial Product" means any product intended for: (i) current or future sale; (ii) use in a fee-for-service; or (iii) any diagnostic, clinical, or therapeutic use.

Access to the Product is limited solely to those officers, employees, and students of PURCHASER's academic institution who need access to the Product to perform Academic Research. PURCHASER shall comply with all applicable laws in its use and handling of the Product and shall keep it under reasonably safe and secure conditions to prevent unauthorized use or access.

These use restrictions will remain in effect for as long as PURCHASER possesses the Product.

COMMERCIAL OR NON-ACADEMIC ENTITIES INTERESTED IN PURCHASING OR USING THE PRODUCT MUST CONTACT licensing@emdmillipore.com AND AGREE TO SEPARATE TERMS OF USE PRIOR TO USE OR PURCHASE.

Genetically Modified Organisms (GMO)

This product contains genetically modified organisms.
Este producto contiene organismos genéticamente modificados.
Questo prodotto contiene degli organismi geneticamente modificati.
Dieses Produkt enthält genetisch modifizierte Organismen.
Ce produit contient des organismes génétiquement modifiés.
Dit product bevat genetisch gewijzigde organismen.
Tämä tuote sisältää geneettisesti muutettuja organismeja.
Denna produkt innehåller genetiskt ändrade organismer.

Notice

We provide information and advice to our customers on application technologies and regulatory matters to the best of our knowledge and ability, but without obligation or liability. Existing laws and regulations are to be observed in all cases by our customers. This also applies in respect to any rights of third parties. Our information and advice do not relieve our customers of their own responsibility for checking the suitability of our products for the envisaged purpose.

The information in this document is subject to change without notice and should not be construed as a commitment by the manufacturing or selling entity, or an affiliate. We assume no responsibility for any errors that may appear in this document.

Technical Assistance

Visit the tech service page at SigmaAldrich.com/techservice.

Terms and Conditions of Sale

Warranty, use restrictions, and other conditions of sale may be found at SigmaAldrich.com/terms.

Contact Information

For the location of the office nearest you, go to SigmaAldrich.com/offices.

The life science business of Merck KGaA, Darmstadt, Germany
operates as MilliporeSigma in the U.S. and Canada.

Merck Millicell, Scepter and Sigma-Aldrich are trademarks of Merck KGaA, Darmstadt, Germany or its affiliates. All other trademarks are the property of their respective owners. Detailed information on trademarks is available via publicly accessible resources.

© 2023 Merck KGaA, Darmstadt, Germany and/or its affiliates. All Rights Reserved.

Document Template 20306518 Ver 6.0

00135325 Ver 1.0, Rev 10OCT2023, RC/AB

