

Product Information

MRCK β Active
human, recombinant
GST-tagged, expressed in Sf9 cells

Catalog Number **M9572**
Lot Number 019K1582
Storage Temperature -70°C

Synonyms: CDC42BPB; KIAA1124

Product Description

Myotonic Dystrophy Kinase-Related cdc42-binding kinase beta (MRCK β) belongs to the DMPK subfamily.¹ The myotonic dystrophy kinase-related kinases and myotonic dystrophy kinase-related Cdc42 binding kinase (MRCK) are effectors of RhoA and Cdc42, respectively, where they are involved in actin cytoskeletal reorganization and neurite outgrowth.² Effects of the repeat expansion on the DMPK gene may be responsible for muscle and heart features of Myotonic Dystrophy.

This recombinant product was expressed by baculovirus in Sf9 insect cells using an N-terminal GST-tag. The gene accession number is NM 006035. It is supplied in 50 mM Tris-HCl, pH 7.5, with 150 mM NaCl, 0.25 mM DTT, 0.1 mM EGTA, 0.1 mM EDTA, 0.1 mM PMSF, and 25% glycerol.

Molecular mass: ~73 kDa

Purity: $\geq 70\%$ (SDS-PAGE, see Figure 1)

Specific Activity: 102–138 nmole/min/mg (see Figure 2)

Precautions and Disclaimer

This product is for R&D use only, not for drug, household, or other uses. Please consult the Material Safety Data Sheet for information regarding hazards and safe handling practices.

Storage/Stability

The product ships on dry ice and storage at -70°C is recommended. After opening, aliquot into smaller quantities and store at -70°C . Avoid repeated handling and multiple freeze/thaw cycles.

Figure 1.
SDS-PAGE Gel of Lot Number 019K1582:
>90% (densitometry)

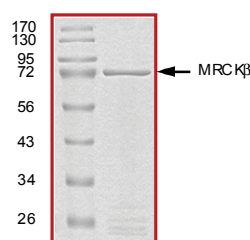
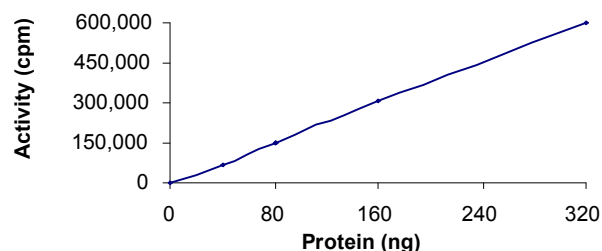


Figure 2.
Specific Activity of Lot Number 019K1582:
120 nmole/min/mg



Procedure

Preparation Instructions

Kinase Assay Buffer – 25 mM MOPS, pH 7.2, 12.5 mM glycerol 2-phosphate, 25 mM MgCl₂, 5 mM EGTA, and 2 mM EDTA. Just prior to use, add DTT to a final concentration of 0.25 mM.

Kinase Dilution Buffer – Dilute the Kinase Assay Buffer 5-fold with a 50 ng/μl BSA solution.

Kinase Solution – Dilute the Active MRCK β (0.1 $\mu\text{g}/\mu\text{l}$) with Kinase Dilution Buffer to the desired concentration. **Note:** The lot-specific specific activity plot may be used as a guideline (see Figure 2). It is recommended that the researcher perform a serial dilution of Active MRCK β kinase for optimal results.

10 mM ATP Stock Solution – Dissolve 55 mg of ATP in 10 ml of Kinase Assay Buffer. Store in 200 μl aliquots at $-20\text{ }^{\circ}\text{C}$.

γ - ^{32}P -ATP Assay Cocktail (250 μM) – Combine 5.75 ml of Kinase Assay Buffer, 150 μl of 10 mM ATP Stock Solution, 100 μl of γ - ^{32}P -ATP (1 mCi/100 μl). Store in 1 ml aliquots at $-20\text{ }^{\circ}\text{C}$.

Substrate Solution – Dissolve the synthetic peptide substrate (KRRRLASLR) in water at a final concentration of 1 mg/ml.

1% phosphoric acid solution – Dilute 10 ml of concentrated phosphoric acid to a final volume of 1 L with water.

Kinase Assay

This assay involves the use of the ^{32}P radioisotope. All institutional guidelines regarding the use of radioisotopes should be followed.

1. Thaw the Active MRCK β , Kinase Assay Buffer, Substrate Solution, and Kinase Dilution Buffer on ice. The γ - ^{32}P -ATP Assay Cocktail may be thawed at room temperature.
2. In a pre-cooled microcentrifuge tube, add the following solutions to a volume of 20 μl :
 - 10 μl of Kinase Solution
 - 5 μl of Substrate Solution
 - 5 μl of cold water (4 $^{\circ}\text{C}$)
3. Set up a blank control as outlined in step 2, substituting 5 μl of cold water (4 $^{\circ}\text{C}$) for the Substrate Solution.
4. Initiate each reaction with the addition of 5 μl of the γ - ^{32}P -ATP Assay Cocktail, bringing the final reaction volume to 25 μl . Incubate the mixture in a water bath at 30 $^{\circ}\text{C}$ for 15 minutes.
5. After the 15 minute incubation, stop the reaction by spotting 20 μl of the reaction mixture onto an individually pre-cut strip of phosphocellulose P81 paper.

6. Air dry the pre-cut P81 strip and sequentially wash in the 1% phosphoric acid solution with constant gentle stirring. It is recommended the strips be washed a total of 3 times of ~ 10 minutes each.
7. Set up a radioactive control to measure the total γ - ^{32}P -ATP counts introduced into the reaction. Spot 5 μl of the γ - ^{32}P -ATP Assay Cocktail on a pre-cut P81 strip. Dry the sample for 2 minutes and read the counts. Do not wash this sample.
8. Count the radioactivity on the P81 paper in the presence of scintillation fluid in a scintillation counter.
9. Determine the corrected cpm by subtracting the blank control value (see step 3) from each sample and calculate the kinase specific activity

Calculations:

1. Specific Radioactivity (SR) of ATP (cpm/nmole)

$$\text{SR} = \frac{\text{cpm of } 5 \mu\text{l of } \gamma\text{-}^{32}\text{P}\text{-ATP Assay Cocktail}}{\text{nmole of ATP}}$$

cpm – value from control (step 7)
nmole – 1.25 nmole (5 μl of 250 μM ATP Assay Cocktail)

2. Specific Kinase Activity (SA) (nmole/min/mg)

$$\text{nmole/min/mg} = \frac{\Delta\text{cpm} \times (25/20)}{\text{SR} \times \text{E} \times \text{T}}$$

SR = specific radioactivity of the ATP (cpm/nmole ATP)
 Δcpm = cpm of the sample – cpm of the blank (step 3)
25 = total reaction volume
20 = spot volume
T = reaction time (minutes)
E = amount of enzyme (mg)

References

1. Lam, L.T. et al., Characterization of a monoclonal antibody panel shows that the myotonic dystrophy protein kinase, DMPK, is expressed almost exclusively in muscle and heart. *Hum. Mol. Genet.*, **9**, 2167-2173 (2000).
2. Tan, I. et al., Phosphorylation of a novel myosin binding subunit of protein phosphatase 1 reveals a conserved mechanism in the regulation of actin cytoskeleton. *J. Biol Chem.*, **276**, 21209-21216 (2001).

BKR,MAM 02/09-1

Sigma brand products are sold through Sigma-Aldrich, Inc.

Sigma-Aldrich, Inc. warrants that its products conform to the information contained in this and other Sigma-Aldrich publications. Purchaser must determine the suitability of the product(s) for their particular use. Additional terms and conditions may apply. Please see reverse side of the invoice or packing slip.