

## Product Information

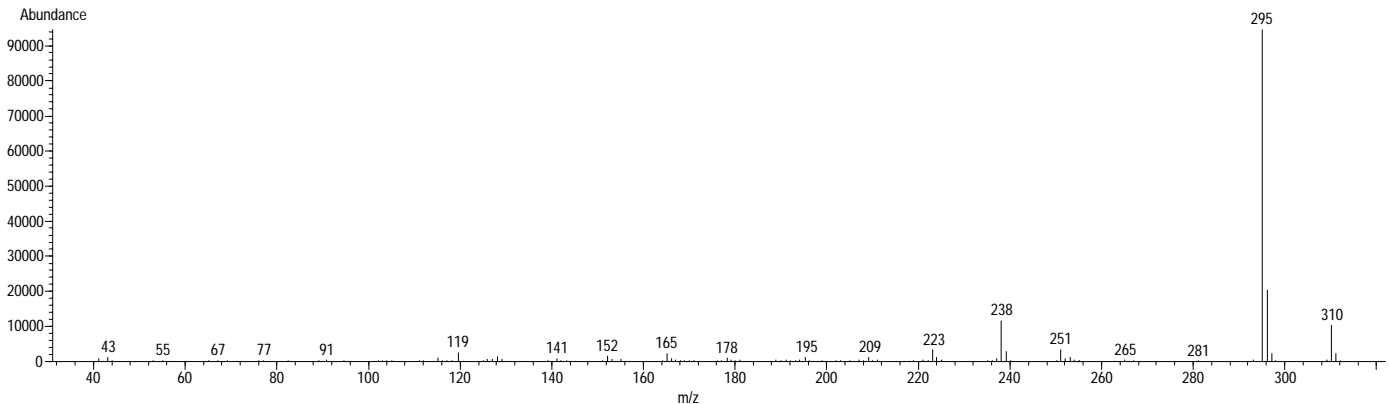
### CANNABINOL

Methanol Solution

**Product Number** C 6520  
**Lot Number** 41K8801  
**CAS Number** [521-35-7]  
**Concentration** 1.02 mg Cannabinol/mL GC grade methanol (conc. verified by UV)  
**Molecular Formula** C<sub>21</sub>H<sub>26</sub>O<sub>2</sub>  
**Molecular Weight** 310.4  
**DEA Class** Exempt preparation of Class I

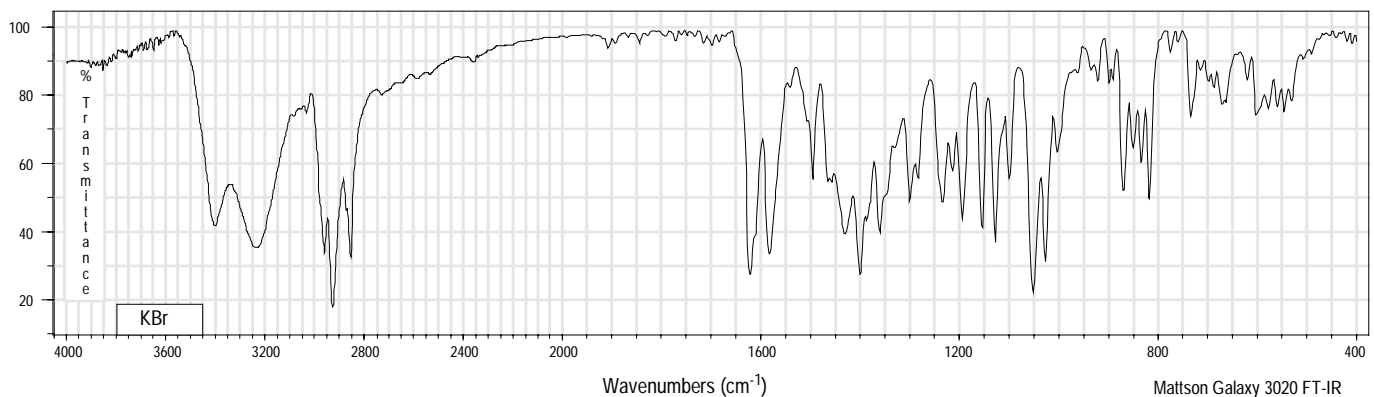
**Synonyms** 6,6,9-Trimethyl-3-pentyl-6H-dibenzo[b,d]pyran-1-ol; CBN  
**Stability** If stored at 2-8°C in an air tight container, protected from light, decomposition of the product is less than 1% in 48 months. After opening, concentration may change due to loss of solvent.  
**Expiration Date** December 2005  
**Storage** 2-8°C; After opening, transfer contents to small vial provided for your convenience.

70 eV Electron Ionization Mass Spectrum



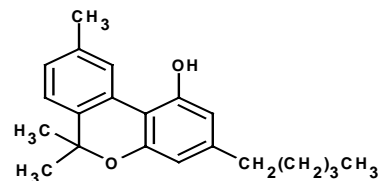
Hewlett-Packard 5890 Series II Gas Chromatograph  
Hewlett-Packard 5971 Mass Selective Detector  
Hewlett-Packard G1034C MS ChemStation (HP-DOS series)

### FT-IR



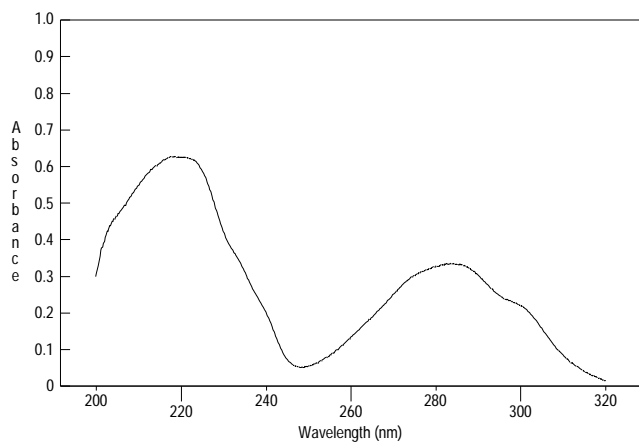
# CANNABINOL

Methanol Solution  
Product Number C 6520  
Lot Number 41K8801



## Ultraviolet Spectrum

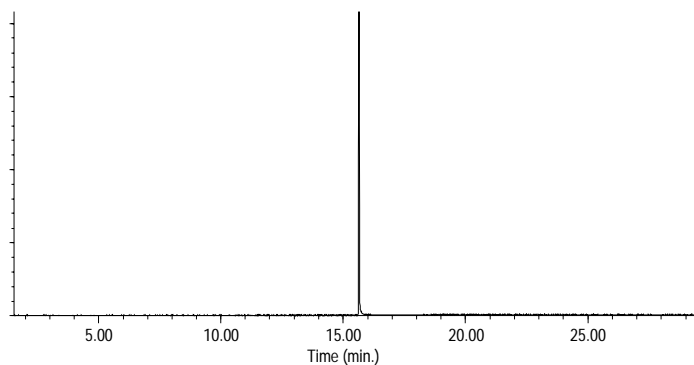
<b>Peak</b>	283.8 nm
<b>Absorbance</b>	0.335
<b>Solvent</b>	Methanol
<b>Dilution</b>	1 : 199 (v/v)



Kontron Uvikon 940

## Capillary Gas Chromatography

**Column** Supelco SPB-1 (Cat. No. 2-4162)  
**I.D.** 0.20 mm **Length** 15 m **Film Thickness** 0.20  $\mu$ m  
**Oven Temperature** 50°C (2 min.), then 15°/min. to 300°C, hold 11 min.  
**Injector Temperature** 250°C, Split  
**Detector** Hewlett-Packard 5971  
Mass Selective Detector (70 eV, 40-500 m/z)



Hewlett-Packard 5890

C 6520/41K8801/04/13/01

This product is not for *in vitro* diagnostic procedures. For R&D use only. Not for drug, household or other uses.

Sigma brand products are sold through Sigma-Aldrich, Inc.

Sigma-Aldrich, Inc. warrants that its products conform to the information contained in this and other Sigma-Aldrich publications.

Purchaser must determine the suitability of the product(s) for their particular use. Additional terms and conditions may apply.

Please see reverse side of the invoice or packing slip.