

Salvia Miltiorrhiza

Dānshēn, 丹参

Salvia miltiorrhiza, also known as red sage, Chinese sage, tan shen, or danshen, is a perennial plant in the Salvia family. The dried root of Salvia miltiorrhiza, is a Chinese medicine used to promote blood flow and treat vascular disease. The main active constituents of salvia are diterpene quinones, known as tanshinones. Most of these compounds are colored, providing the reddish appearance of the roots. The tanshinones are unique chemical constituents, and similar compounds are not found in other Chinese herbs.

Salvia Miltiorrhiza

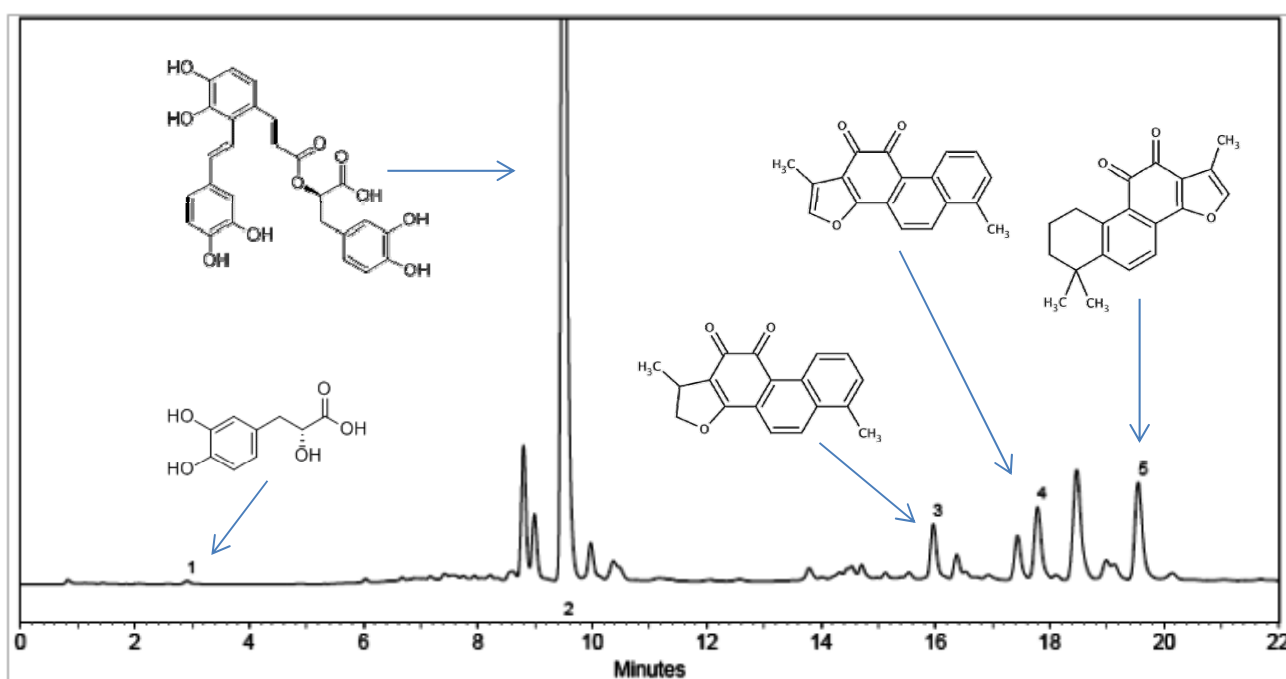
Chromolith® RP-18 endcapped

Chromatographic Conditions

Column: Chromolith® Performance RP-18 endcapped 100x4.6mm
Injection: 5 µL
Detection: UV 254 nm
Flow Rate: 2.0 mL/min
Mobile Phase: A: Acetonitrile
B: 0.1 % phosphoric acid
Temperature: 30 °C
Diluent: Mobile phase
Sample: Alcohol extract of roots

1.02129.0001

Time (min)	% A	% B
0	3	97
3	3	97
5	20	80
11	33	67
12	46	54
20	70	30
22	95	5



Chromatographic Data

No.	Compound	Time (min)	T _{USP}	Resolution
1	Salvianic acid A	2.9	1.3	-
2	Salvianolic acid B	9.5	1.2	-
3	Dihydro-tanshinone	15.9	1.3	-
4	Tanshinone I	17.8	1.4	-
5	Tanshinone IIA	19.6	1.4	-