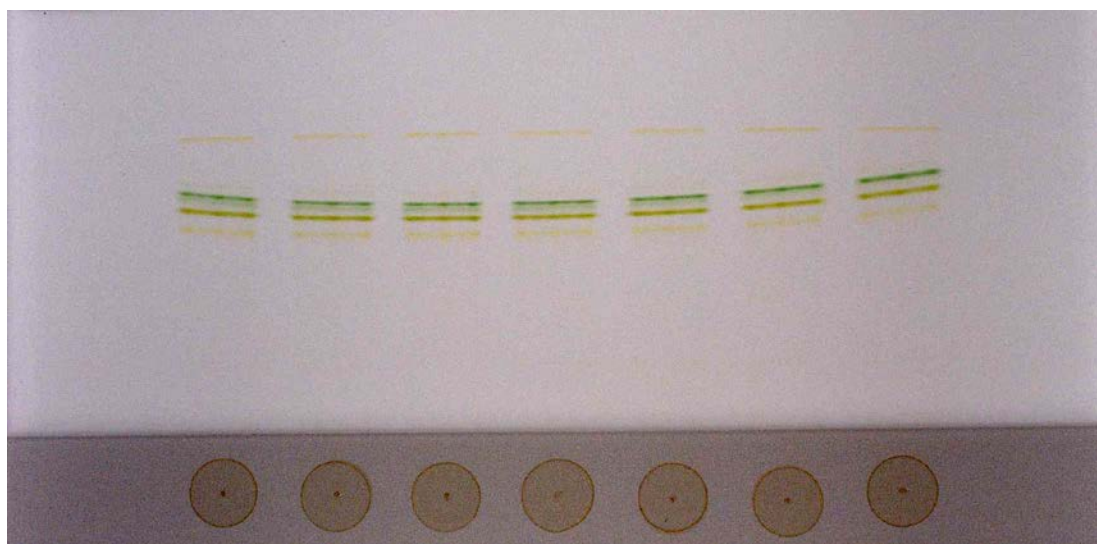


# Separation of plant pigments

Plate	HPTLC Silica gel 60 with concentrating zone, 20x10cm (P/N 1. 13749, alt P/N 1. 13748)
Mobile phase (v/v)	100ml petroleum ethe / 11ml isopropanol / 5 drops water
Migration distance	5 cm
Application volume	2 µL
Sample preparation	Milling leafs in a mortar with acetone
Chamber	Normal chamber without chamber saturation
Detection	Detection white light



## Chromatographic data

No.	Compounds	Solvent
1 to 5    leafs	carotenes pheophytin chlorophyll a chlorophyll b lutein violaxanthin neoxanthin	acetone