



**Ras-Raf Oncoprotein
Panel 6-Plex
Magnetic Bead Kit
96-well Plate**

Cat. # 48-684MAG

MILLIPLEX® MAP

**Ras-Raf Oncoprotein 6-plex Magnetic Bead Panel
96-well Plate Assay**

Cat # 48-684MAG

<u>TABLE OF CONTENTS</u>	<u>PAGE</u>
Introduction	2
Principle	3
Storage Conditions Upon Receipt	3
Reagents Supplied	4
Materials Required But Not Provided	5
Safety Precautions	6
Technical Guidelines	7
Sample Collection And Storage	8
Preparation of Reagents For Immunoassay	10
Immunoassay Protocol	12
Washing Note	13
Instrument Settings	13
Supplemental Protocol	14
Representative Data	15
Troubleshooting Guide	16
Replacement Reagents	18
Ordering Information	19
Well Map	20

For Research Use Only. Not for Use in Diagnostic Procedures.

By purchasing this product, which contains fluorescently labeled microsphere beads authorized by Luminex® Corporation (“Luminex®”), you, the customer, acquire the right under Luminex®’s patent rights, if any, to use this product or any portion of this product, including without limitation the microsphere beads contained herein, only with Luminex®’s laser based fluorescent analytical test instrumentation marketed under the name of Luminex® 100™ IS, 200™, HTS, FLEXMAP 3D®, MAGPIX®.

INTRODUCTION

Ras proteins are GTPases encoded by three genes: *HRAS*, *KRAS*, and *NRAS*. The protein products of these genes exhibit a high degree of sequence identity and are regulated by a conserved mechanism: exchange of GDP for GTP switches the Ras protein into an active conformation. In its GTP-bound state, Ras has high affinity for its downstream effectors, including the Raf family of protein kinases (ARAF, BRAF, and CRAF/RAF1). Raf proteins, in turn, signal through MEK to activate the MAPK pathway. In healthy cells, Ras activation is a transient response to extracellular growth stimuli and is restricted by the rapid conversion of Ras-GTP back to Ras-GDP. However, the Ras-Raf-MEK pathway is often aberrantly activated in cancer. Mutations in the RAS genes are amongst the most frequent oncogenic events, occurring in ~25% of human cancers, with mutations altering the 12th amino acid (glycine) being particularly prevalent. These driver mutations maintain Ras in a constitutively active, GTP-bound state. Additionally, certain cancers feature *KRAS* gene amplification, although the effects of gene amplification on protein expression are not yet well-characterized. The Ras-Raf-MEK pathway can also be activated downstream of Ras. *BRAF* is another well-established oncogene, with the *BRAF V600E* mutation being prevalent in melanoma. While targeting this BRAF oncoprotein has had therapeutic efficacy, treating cancers driven by Ras oncoproteins remains an urgent unmet clinical need.

In addition to the relevance of the Ras-Raf-MEK pathway in precision oncology, measurement of these proteins is integral to many experimental workflows. Ectopic expression of Ras oncoproteins has become a mainstay of cancer biology research, presenting a need for research tools to verify oncogene expression and efficiently characterize downstream signaling. The MILLIPLEX[®] MAP Ras-Raf Oncoprotein Magnetic Bead Panel 6-plex allows researchers to analyze this pathway via multiplex detection of Ras, the 2 most common Ras oncoproteins, and phosphoproteins downstream of Ras, in cell line models and tissue lysates.

MILLIPLEX[®] MAP offers the broadest selection of analytes across a wide range of pathways. Once the panel of interest has been identified, you can rely on the quality we build into each kit to produce results you can trust. Performance criteria evaluated during the validation process include: cross-reactivity, assay CVs, kit stability, and sample behavior. In addition, each kit meets stringent Quality Control criteria to ensure lot-to-lot reproducibility.

Each MILLIPLEX[®] MAP cell signaling panel includes:

- Stimulated and unstimulated cell lysates provided to qualify assay performance
- Premixed magnetic beads to capture analytes of interest
- Optimized detection antibody cocktails designed to yield consistent analyte profiles within a panel

The MILLIPLEX[®] MAP Ras-Raf Oncoprotein Magnetic Bead Panel 6-plex is used to detect changes in phosphorylated BRAF (Ser446), CRAF (Ser338), and MEK1 (Ser217/Ser221), as well as total protein levels of Ras and the oncogenic mutant Ras proteins, RasG12D and RasG12V, in cell lysates using the Luminex[®] system. The assays for total Ras, RasG12D, and RasG12V detect H-Ras, N-Ras, and K-Ras protein. Two lyophilized cell lysates are included as controls in the Ras-Raf Oncoprotein kit: THP-1 cells possess an *NRAS* mutation resulting in the production of a RasG12D oncoprotein, whereas COR-L23 cells contain a *KRAS* mutation resulting in the expression of a RasG12V oncoprotein. The detection assay is a rapid, convenient alternative to Western Blotting and immunoprecipitation procedures. Each kit has sufficient reagents for one 96-well plate assay.

For Research Use Only. Not for Use in Diagnostic Procedures.

Please read entire protocol before use.

It is important to use same assay incubation conditions throughout your study.

PRINCIPLE

MILLIPLEX[®] MAP is based on the Luminex[®] xMAP[®] technology — one of the most respected multiplex technologies available. This technology finds applications throughout the life sciences and enables a variety of bioassays, including immunoassays, on the surface of fluorescent-coded magnetic bead (MagPlex[®]-C and non-magnetic bead (MicroPlex[®]) microspheres.

- Luminex[®] uses proprietary techniques to internally color-code microspheres with multiple fluorescent dyes. Through precise concentrations of these dyes, distinctly colored bead sets of 500 5.6 μm non-magnetic or 80 6.45 μm magnetic polystyrene microspheres can be created, each of which is coated with a specific capture antibody.
- After an analyte from a test sample is captured by the bead, a biotinylated detection antibody is introduced.
- The reaction mixture is then incubated with Streptavidin-PE conjugate, the reporter molecule, to complete the reaction on the surface of each microsphere.
- The microspheres are illuminated, and the internal dyes fluoresce, marking the microsphere set(s) used in a particular assay. A second illumination source excites PE, the fluorescent dye on the reporter molecule.
- Finally, high-speed digital-signal processors identify each individual microsphere and quantify the result of its bioassay based on fluorescent reporter signals.

The capability of adding multiple conjugated beads to each sample results in the ability to obtain multiple results from each sample. Open-architecture xMAP[®] technology enables multiplexing of many types of bioassays reducing time, labor and costs over traditional methods.

STORAGE CONDITIONS UPON RECEIPT

- Recommended storage for kit components is 2 - 8°C.
- Once the control lysates have been reconstituted, immediately transfer contents into polypropylene vials. **DO NOT STORE RECONSTITUTED CONTROLS IN LYOPHILIZATION VIALS.** For long-term storage, freeze reconstituted standards and controls at $\leq -70^{\circ}\text{C}$. Aliquot if needed. Avoid freeze/thaw cycles.
- **DO NOT FREEZE Antibody-Immobilized Beads, Detection Antibody, and Streptavidin-Phycoerythrin.**

REAGENTS SUPPLIED

REAGENTS SUPPLIED	CATALOG NUMBER	VOLUME	QUANTITY
MILLIPLEX [®] MAP 6-plex Ras-Raf Oncoprotein Panel, Magnetic Beads (20X)	42-684MAG	180 µL	1 tube
MILLIPLEX [®] MAP 6-plex Ras-Raf Oncoprotein Panel, Biotin (20X) (Detection Antibody)	44-684KMG	180 µL	1 tube
MILLIPLEX [®] MAP Lysis Buffer	43-040	55 mL	1 bottle
MILLIPLEX [®] MAP Assay Buffer 2	43-041	55 mL	1 bottle
MILLIPLEX [®] MAP COR-L23 Cell Lysate: Serum	47-318	-----	1 vial
MILLIPLEX [®] MAP THP-1 Cell Lysate: Serum	47-246	-----	1 vial
MILLIPLEX [®] MAP Streptavidin-Phycoerythrin	45-001H	150 µL	1 tube
MILLIPLEX [®] MAP Amplification Buffer (1X)	43-024A	3.2 mL	1 bottle
Set of one 96-well Plate and 2 sealers	-----	-----	1 plate, 2 sealers
Empty mixing vials	-----	-----	3 vials

Analyte	Magnetic Bead Region
Total Ras	21
RasG12D	38
RasG12V	39
pBRAF	43
pCRAF	44
pMEK1	55

MATERIALS REQUIRED BUT NOT PROVIDED

Reagents


- Protease inhibitors (EMD Millipore Catalog # 535140 or similar product)
- Coomassie or BCA-based total protein assay (EMD Millipore Catalog # 71285 or similar product) or an assay normalization control, such as the GAPDH (Catalog # 46-667MAG) MAPmate™ or β -Tubulin (Catalog # 46-713MAG) MAPmate™
- Luminex® Sheath Fluid (20 L, EMD Millipore Catalog # SHEATHFLUID) or Luminex® Drive Fluid (EMD Millipore Catalog # MPXDF-4PK)
- 10X Assay Buffer 1 (EMD Millipore Catalog # MPEQ-AB) if using a magnetic plate washer (see Supplemental Protocol).

Instrumentation / Materials

- Adjustable Pipettes with Tips capable of delivering 25 μ L to 1000 μ L
- Multichannel Pipettes capable of delivering 25 μ L to 200 μ L
- Reagent Reservoirs
- Polypropylene Microfuge Tubes
- Aluminum Foil
- Absorbent Pads
- Laboratory Vortex Mixer
- Sonicator (Branson Ultrasonic Cleaner Model # B200 or equivalent)
- Titer Plate Shaker (VWR® Microplate Shaker Cat # 12620-926 or equivalent)
- Luminex® 200™, HTS, FLEXMAP 3D®, or MAGPIX® with xPONENT® software by Luminex® Corporation
- Filter devices for clearing lysates
 - 2 mL or greater, EMD Millipore Catalog # SLHVX13NL
 - 0.5 – 2 mL, EMD Millipore Catalog # UFC40DV25
 - Less than 0.5 mL, EMD Millipore Catalog # UFC30DV25
 - For 96-well plates, EMD Millipore Catalog # MSBVN1210
- Use of a handheld Magnetic Separation Block (EMD Millipore Catalog # 40-285 or equivalent) is recommended. If using an Automatic Plate washer for magnetic beads (BioTek® ELx405, EMD Millipore Catalog # 40-015 or equivalent), consult Supplemental Protocol.

SAFETY PRECAUTIONS

- All tissue components and biological materials should be handled as potentially hazardous. Follow universal precautions as established by the Centers for Disease Control and Prevention and by the Occupational Safety and Health Administration when handling and disposing of infectious agents.
- Sodium Azide or Proclin has been added to some reagents as a preservative. Although the concentrations are low, Sodium Azide may react with lead and copper plumbing to form highly explosive metal azides. Dispose of unused contents and waste in accordance with international, federal, state and local regulations.

Full Labels of Hazardous component(s): Ingredient, Cat #		Full Label	
COR-L23 Cell lysate	47-318		Warning. Harmful if swallowed. Wash skin thoroughly after handling. Do not eat, drink or smoke when using this product. IF SWALLOWED: Call a POISON CENTER/doctor if you feel unwell. Rinse mouth. Dispose of contents/ container to an approved waste disposal plant.
THP-1 Cell Lysate: Serum	47-246		Harmful to aquatic life with long lasting effects. Avoid release to the environment.

TECHNICAL GUIDELINES

To obtain reliable and reproducible results, the operator should carefully read this entire manual and fully understand all aspects of each assay step before running the assay. The following notes should be reviewed and understood before the assay is set up.

- FOR RESEARCH USE ONLY. NOT FOR USE IN DIAGNOSTIC PROCEDURES.
- Do not use beyond the expiration date on the label.
- Do not mix or substitute reagents with those from other lots or sources.
- The Antibody-Immobilized Beads are light sensitive and must be protected from light at all times. Cover the assay plate containing beads with opaque plate lid or aluminum foil during all incubation steps.
- It is important to allow all reagents to warm to room temperature (20-25°C) before use in the assay.
- Incomplete washing can adversely affect the assay outcome. All washing must be performed with the Assay Buffer provided.
- Any unused mixed Antibody-Immobilized Beads may be stored in the Mixing Bottle at 2-8°C for up to one week.
- The plate should be read immediately after the assay is finished. If, however, the plate cannot be read immediately, seal the plate, cover with aluminum foil or an opaque lid, and store the plate at 2-8°C for up to 24 hours. Prior to reading, agitate the plate on the plate shaker at room temperature for 10 minutes. Delay in reading a plate may result in decreased sensitivity for some analytes.
- The titer plate shaker should be set at a speed to provide maximum orbital mixing without splashing of liquid outside the wells. For the recommended plate shaker, this would be a setting of 5-7 which is approximately 500-800 rpm.
- Ensure that the needle probe is clean. This may be achieved by sonication and/or alcohol flushes.
- For FLEXMAP 3D® when using the solid plate in the kit, the final suspension should be in 150 µL and 75 µL should be aspirated.
- Vortex all reagents well before adding to plate.

SAMPLE COLLECTION AND STORAGE

A. Considerations for Cell Stimulation.

1. Treating cells with growth factors (ex. EGF), cytokines (ex. $\text{TNF}\alpha$), or other compounds (ex. Arsenite) induce a multitude of signaling cascades. The duration of stimulation in addition to the concentration of the respective factor/compound should be considered since they influence the degree of phosphorylation of any given analyte.
2. Cellular responses to growth factors are typically improved when cells have been serum starved prior to treatment.
3. Cell lines will differ in the robustness of their signaling response for any given stimulation.
4. The suggested working range of protein concentration for the assay is 1 to 25 μg of total protein/well (25 μL /well at 40 to 1000 $\mu\text{g}/\text{mL}$). A total protein amount of 10 μg / well is generally a good starting point for lysates for which target protein expression levels are unknown.

B. Preparation of cell lysates

MILLIPLEX[®] MAP Lysis Buffer is supplied as **1X** stock solution. The Lysis Buffer contains phosphatase inhibitors *including* 1 mM sodium orthovanadate (Na_3VO_4) but does **NOT** contain protease inhibitors. It is recommended that protease inhibitors (EMD Millipore catalog # 535140 or a similar product) be added immediately before use.

Suggested cell lysis protocol for adherent cells

1. After treatments, wash cells with ice cold Buffered Saline (PBS or TBS) and drain.
2. Add ice-cold **1X** MILLIPLEX[®] MAP Lysis Buffer with freshly added protease inhibitors to cells (0.6 mL per 150 mm dish, 0.3 mL per 100 mm dish, or 0.1 mL per well of 24-well plate).
3. Scrape adherent cells off the dish with a cell scraper. Transfer the cell suspension into a centrifuge tube and gently rock for 10-15 minutes at 4°C.
4. Remove particulate matter by filtration.
 - a. Suggested EMD Millipore filters:
 - (i) 2 mL or greater, EMD Millipore Catalog # SLPBDZ5NZ
 - (ii) 0.5 – 2 mL, EMD Millipore Catalog # UFC 0DV 25
 - (iii) Less than 0.5 mL, EMD Millipore Catalog # UFC30DV00
5. Aliquot and store the lysate at -70°C. The lysate should be stable for several months.
6. It is recommended that the lysate be diluted at least 1:10 with PBS for determining the protein concentration with Coomassie-based assays or 1:4 for BCA assays. Alternatively, protein quantification may be omitted if an assay normalization control, such as the GAPDH (Catalog # 46-667MAG) MAPmate[™] or β -Tubulin (Catalog # 46-713MAG) MAPmate[™], is used.

Suggested cell lysis protocol for non-adherent cells

1. Pellet the cells by centrifugation (500 – 1000xg) in a tabletop centrifuge for 5 minutes.
2. Wash the cells in ice-cold PBS or TBS.
3. Add ice-cold **1X** MILLIPLEX[®] MAP Lysis Buffer containing freshly prepared protease inhibitors to cells (1 mL per 1 x 10⁷ cells).
4. Gently rock the lysate for 10-15 minutes at 4°C.
5. Remove particulate matter by filtration (See above). Aliquot and store the lysate at -70°C. The lysate should be stable for several months.
6. It is recommended that the lysate be diluted at least 1:10 in PBS for determining the protein concentration with Coomassie-based assays or 1:4 for BCA assays. Alternatively, protein quantification may be omitted if an assay normalization control, such as the GAPDH (Catalog # 46-667MAG) MAPmate[™] or β -Tubulin (Catalog # 46-713MAG) MAPmate[™], is used.

Cell lysis protocol for cells in sterile 96-well tissue culture plates

Adherent or non-adherent cells seeded or grown in sterile 96-well tissue culture grade plates (see supplemental protocols) can be washed, treated, and lysed in the same plate, but need to be filtered in a separate 96-well filter plate. Wash the cells by centrifugation in a microplate carrier 2 minutes at 500xg.

1. Remove the supernatant via aspiration and add 100 μ L of ice-cold PBS or TBS.
2. Centrifuge and remove supernatant via aspiration.
3. Add 30-50 μ L/well of ice-cold 1X MILLIPLEX[®] MAP Lysis Buffer containing freshly prepared protease inhibitors.
4. Place the plate on an orbital shaker (600-800 rpm) for 10-15 minutes at 4°C.
5. Transfer the lysate to a 96-well filter plate that has been pre-wetted with 1X Lysis Buffer.
6. Place a low protein binding, 96-well round bottom or V-bottom plate underneath the filter plate.
7. Centrifuge the plates in a microplate carrier for 5 minutes at 500xg.
8. Store the filtered lysate at -70°C until ready for use.
9. It is recommended that the lysate be diluted at least 1:10 in PBS for determining the protein concentration with Coomassie-based assays or 1:4 for BCA assays. Alternatively, protein quantification may be omitted if an assay normalization control, such as the GAPDH (Catalog # 46-667MAG) MAPmate[™] or β -Tubulin (Catalog # 46-713MAG) MAPmate[™], is used.

PREPARATION OF REAGENTS FOR IMMUNOASSAY

A. Preparation of Ras-Raf Oncoprotein magnetic beads

MILLIPLEX[®] MAP magnetic beads are provided as a **20X** stock solution and should be protected from light.

1. Sonicate **20X** stock magnetic beads for 15 seconds, then vortex for 30 seconds.
2. Dilute the beads to **1X** by combining 0.150 mL beads with 2.85 mL of MILLIPLEX[®] MAP Assay Buffer 2. Use one of the Mixing Bottles provided.
3. Vortex the **1X** capture beads for 15 seconds.
4. For use, transfer 1X beads with a pipette into a reservoir, do not pour from Mixing Bottle.
5. Please note that multiplexing phospho-specific and total or panTyr MAPmate[™] pairs is not recommended due to cross-reactivity.

B. Preparation of Biotin-Labeled Detection Antibody and Streptavidin-PE

MILLIPLEX[®] MAP Detection Antibody is provided as a **20X** stock solution.

1. Vortex the 20X Detection Antibody stock for 10 seconds, it may be necessary to centrifuge briefly after vortexing for complete recovery of contents.
2. Dilute the Detection Antibody to 1X by combining 0.150 mL of Detection Antibody with 2.85 mL of MILLIPLEX[®] MAP Assay Buffer 2. Use one of the Mixing Bottles provided.
3. Vortex the MILLIPLEX[®] MAP Streptavidin-Phycoerythrin 1:25 (SAPE) for 10 seconds.
4. Dilute SAPE by combining 0.120 mL of Streptavidin-Phycoerythrin with 2.88 mL of MILLIPLEX[®] MAP Cell Signaling Assay Buffer 2. Use one of the mixing vials provided.
5. Transfer 1X biotinylated detection antibody and SAPE with a pipette to separate reservoirs. Do not pour from mixing vials.

C. Multiplexing additional MILLIPLEX[®] MAP Cell Signaling Magnetic MAPmates[™] with the 6-plex Ras-Raf Oncoprotein Magnetic Bead Kit.

Additional Cell Signaling Phospho-MAPmates[™] may be combined with this kit, up to a maximum of 9 additional MAPmates[™].

Please note that Total or PanTyr MAPmate[™] pairs should not be multiplexed with the 6-plex Ras-Raf Oncoprotein kit.

1. For each additional Magnetic Bead MAPmate[™], sonicate **20X** stock capture beads for 15 seconds, then vortex for 30 seconds.
2. Add 0.150 mL 6-plex Ras-Raf Oncoprotein Magnetic beads to the mixing vial.
3. For each additional MAPmate[™], add 0.150 mL from each antibody bead vial to the mixing vial and bring final volume to 3.0 mL with Assay Buffer 2. Vortex the mixed beads well.
4. Use the same preparation volumes for the Detection Antibody.

Example 1: When using 2 additional MAPmates™, add 0.150 mL 6-plex Ras-Raf Oncoprotein Beads/ Detection Antibody and 0.150 mL of each additional MAPmate™ Beads/ Detection Antibody to the mixing vial. Then add 2.55 mL Assay Buffer 2, for a final volume of 3.0 mL.

Example 2: When using 5 additional MAPmates, add 0.150 mL 6-plex Ras-Raf Oncoprotein Beads/Detection Antibody and 0.150 mL of each additional MAPmate Beads/ Detection Antibody to the mixing vial. Then add 2.1 mL Assay Buffer 2, for a final volume of 3.0 mL.

D. Preparation of lyophilized MILLIPLEX® MAP Cell Lysates (Catalog # 47-318, 47-246).

MILLIPLEX® MAP COR-L23 Cell Lysate: Serum (# 47-318) is provided as a lyophilized stock of cell lysate prepared from COR-L23 cells treated with serum and is used as a positive control for RasG12V.

MILLIPLEX® MAP THP-1 Cell Lysate: Serum (# 47-246) is provided as a lyophilized stock of cell lysate prepared from THP-1 cells treated with serum and is used as a positive control for RasG12D.

Each of the cell lysates were prepared in MILLIPLEX® MAP Lysis Buffer containing protease inhibitors and lyophilized for stability. The lysates can be used control samples or alternatively, to create calibration curves for relative analyte quantification .

MILLIPLEX® MAP Cell Lysates as a positive or negative control

1. Reconstitute each of the lyophilized cell lysates in 100 µL of ultrapure water. For each vial this will yield 100 µL of lysate at a total protein concentration of 2 mg/mL.
2. Gently vortex and incubate the reconstituted lysates for 5 minutes at RT (store on ice).
3. Pipette 150 µL of MILLIPLEX® MAP Assay Buffer 2 to each cell lysate vial and vortex mix. The cell lysate is now prepared for use in the MILLIPLEX® MAP Ras-Raf Oncoprotein Magnetic Bead Panel.
4. If desired, unused lysate may be stored in its original container at -80°C for up to one month.

IMMUNOASSAY PROTOCOL (96-well Plate and Handheld Magnetic Separation Block)

1. Dilute filtered lysates at least 1:1 in MILLIPLEX[®] MAP Assay Buffer. The suggested working range of protein concentration for the assay is 1 to 25 µg of total protein/well (25 µL/well at 40 to 1,000 µg/mL).
2. Add 50 µL of Assay Buffer into each well of the plate. Cover and mix on a plate shaker for 10 minutes at room temperature (20-25°C).
3. Decant Assay Buffer and remove the residual amount from all wells by inverting the plate and tapping it smartly onto absorbent towels several times.
4. Vortex the **1X** bead suspension for 10 seconds. Add 25 µL of 1X bead suspension to each well.
5. Add 25 µL of Assay Buffer, reconstituted control cell lysates and sample lysates to appropriate wells and incubate overnight (16-20 hours) at 2-8°C on a plate shaker (600-800 rpm) protected from light.
6. Attach handheld magnetic separation block to plate, allow 60 seconds for beads to settle and decant samples and controls.
7. Remove plate from magnetic separation block and wash plate with 100 µL Assay Buffer per well (see **WASHING NOTE** below). Repeat for a total of two washes.
8. Add 25 µL/well of **1X** MILLIPLEX[®] MAP Detection Antibody.
9. Seal, cover with lid and incubate with agitation on a plate shaker for 1 hour at room temperature (20-25°C).
10. Attach Magnetic Separation Block, wait for 60 seconds and decant Detection Antibody.
11. Remove plate from magnetic separation block and wash plate once with 100 µL Assay Buffer per well (see WASHING NOTE below).
12. Add 25 µL of 1X MILLIPLEX[®] MAP Streptavidin-Phycoerythrin (SAPE).
13. Seal, cover with lid and incubate with agitation on a plate shaker for 15 minutes at room temperature (20-25°C).
14. **DO NOT REMOVE SAPE.** Add 25 µL of MILLIPLEX[®] MAP Amplification Buffer to each well.
15. Seal, cover, and incubate with agitation on a plate shaker for 15 minutes at room temperature (20-25°C).
16. Attach Magnetic Separation Block, wait for 60 seconds and decant SAPE /Amplification buffer.
17. Add 150 µL of sheath fluid and mix for 5 minutes on plate shaker. Analyze using the Luminex[®] system.

Add 50 µL Assay Buffer per well



Shake 10 min, RT
Decant buffer

- Add 25 µL 1X beads to wells
- Add 25 µL Assay Buffer to the blank well
- Add 25 µL control and sample lysates to appropriate wells



Incubate overnight (16-20 hours) at 4°C with shaking; dark

Wash 2X with 100 µL Assay Buffer. Add 25 µL 1X Detection Antibody.



Incubate 1 hr at RT with shaking; dark

Remove Detection Antibody and wash 1X with 100 µL Assay Buffer. Add 25 µL 1X Streptavidin-PE (SAPE)



Incubate 15 min at RT with shaking; dark

DO NOT REMOVE SAPE and add 25 µL Amplification buffer



Incubate 15 min at RT with shaking; dark

Remove Streptavidin-PE/ Amplification buffer and resuspend beads in 150 µL sheath fluid. Read results using appropriate Luminex[®] instrument.



WASHING NOTE: For handheld magnet, rest plate on magnet for 60 seconds to allow complete settling of magnetic beads. Remove well contents by gently decanting the plate in an appropriate waste receptacle and gently tapping on absorbent pads to remove residual liquid. Wash plate with 100 μ L of Assay Buffer by removing plate from magnet, adding Assay Buffer, shaking for 30 seconds, reattaching to magnet, letting beads settle for 60 seconds and removing well contents as previously described after each wash. Repeat wash steps as recommended in Assay Procedure.

INSTRUMENT SETTINGS

Luminex[®] 200[™], HTS, FLEXMAP 3D[®] and MAGPIX[®] with xPONENT[®] software:

These specifications are for the Luminex[®] 200[™], Luminex[®] HTS, Luminex[®] FLEXMAP 3D[®] and Luminex[®] MAGPIX[®] with xPONENT[®] software. Luminex[®] instruments with other software (e.g. MasterPlex[®], StarStation, LiquiChip, Bio-Plex[®] Manager[™], LABScan[™] 100) would need to follow instrument instructions for gate settings and additional specifications from the vendors for reading Luminex[®] Magnetic Beads.

For magnetic bead assays, the Luminex[®] 200[™] and HTS instruments must be calibrated with the xPONENT[®] 3.1 compatible Calibration Kit (EMD Millipore Catalog # 40-275) and performance verified with the Performance Verification Kit (EMD Millipore Catalog # 40-276). The Luminex[®] FLEXMAP 3D[®] instrument must be calibrated with the FLEXMAP 3D Calibrator Kit (EMD Millipore Catalog # 40-028) and performance verified with the FLEXMAP 3D[®] Performance Verification Kit (EMD Millipore Catalog # 40-029). The Luminex[®] MAGPIX[®] instrument must be calibrated with the MAGPIX[®] Calibration Kit (EMD Millipore Catalog # 40-049) and performance verified with the MAGPIX[®] Performance Verification Kit (EMD Millipore Catalog # 40-050).

NOTE: These assays cannot be performed on any instruments running Luminex[®] IS 2.3 or Luminex[®] 1.7 software.

The Luminex[®] probe height must be adjusted to the plate provided in the kit. Please use EMD Millipore Catalog # MAG-PLATE, if additional plates are required for this purpose.

Events:	50 per bead	
Sample Size:	100 μ L	
Gate Settings:	8,000 to 15,000	
Reporter Gain:	Default (Low PMT)	
Time Out:	60 seconds	
Bead Region:	Total Ras	21
	RasG12D	38
	RasG12V	39
	pBRAF	43
	pCRAF	44
	pMEK1	55

SUPPLEMENTAL PROTOCOL

Plate Washer Use

The use of a plate washer is not a recommended method of washing for cell signaling assays. Deterioration of assay performance and well-to-well variability have been noted when using plate washers. If desired, MPEQ-AB may be purchased and used as a general wash buffer with plate washers. MPEQ-AB should be diluted to 1X for use in plate washers. Follow standard protocol wash instructions when using a plate washer (2 washes after sample incubation). Contact EMD Millipore Technical Service if additional instructions are required.

REPRESENTATIVE DATA

6-plex Ras-Raf Oncoprotein Panel Analysis of serum-treated THP-1 and COR-L23 cells

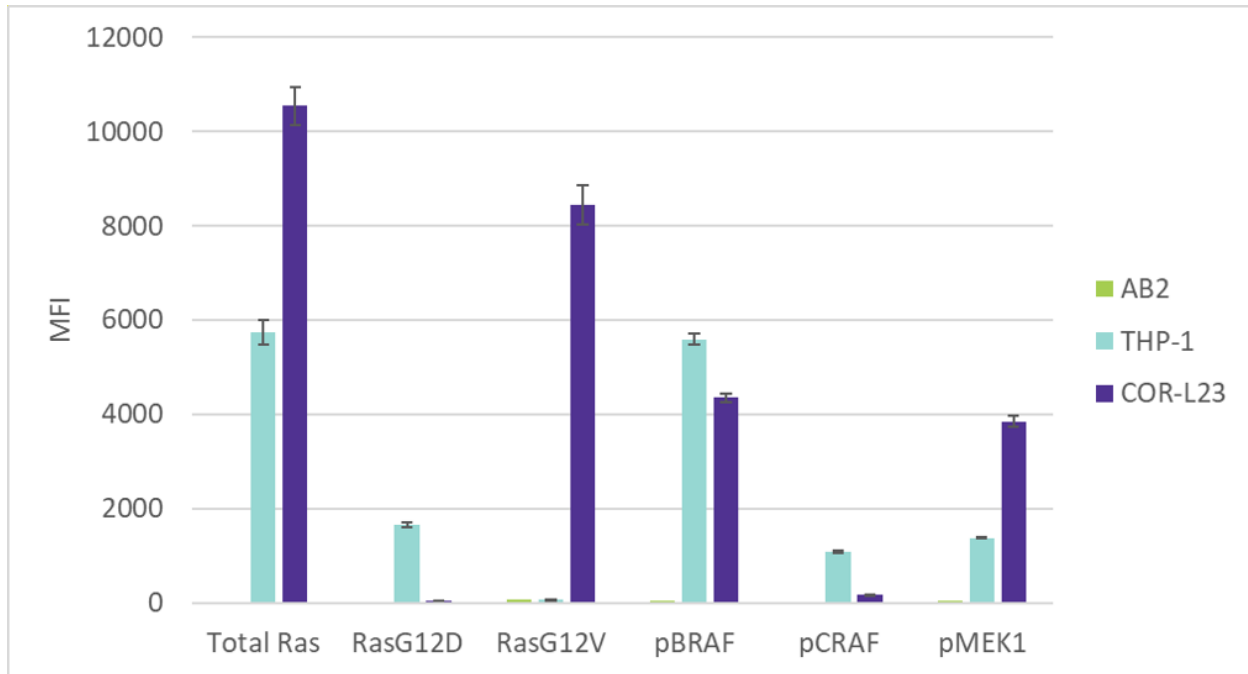


Figure 1. Multiplex analysis of THP-1 and COR-L23 cells treated with serum. Serum treated THP-1 (47-246) and COR-L23 (47-318) lyophilized cell lysates were rehydrated in water and diluted in Assay Buffer 2, per kit instructions. 20 µg total protein of each lysate was analyzed according the Assay protocol (lysate incubation at 4°C overnight). The Median Fluorescence Intensity (MFI) was measured with the Luminex® system. Data represent the average and standard deviation of three replicate wells.

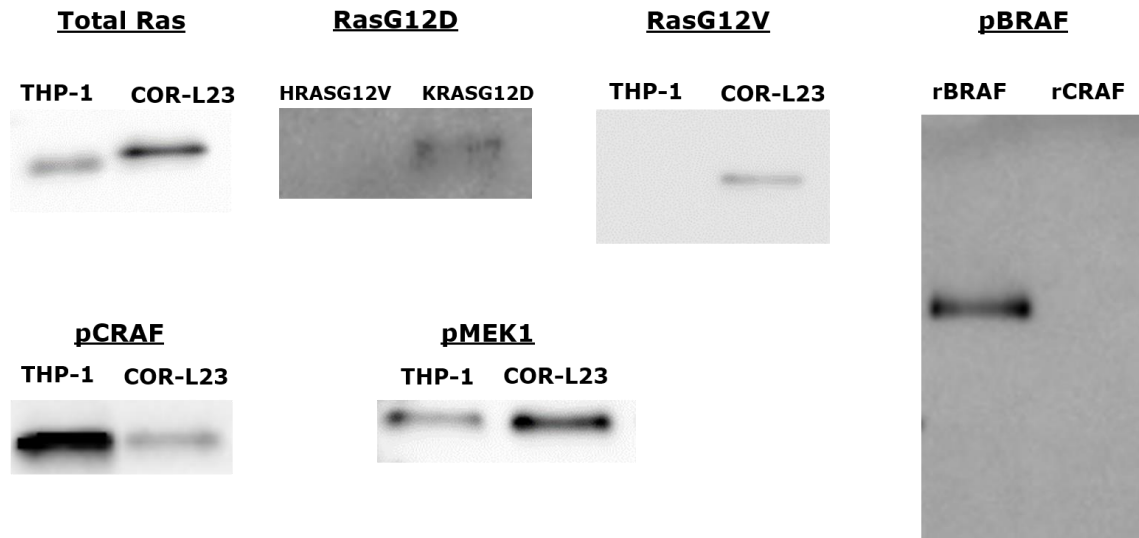


Figure 2. Demonstration of specificity by Immunoprecipitation/Western Blot. Recombinant HRASG12V, KRASG12D, BRAF, and CRAF proteins or THP-1 and COR-L23 cell lysates were incubated with individual capture beads from the Ras-Raf Oncoprotein panel in order to immunoprecipitate the respective protein. Immunoprecipitated proteins were separated on SDS-PAGE, transferred to nitrocellulose, and probed with the individual biotin-labeled detection antibodies used in the kit. The proteins were imaged using Streptavidin-HRP and chemiluminescence.

TROUBLESHOOTING GUIDE

Problem	Probable Cause	Solution
Insufficient bead count	Bead mix prepared inappropriately	Sonicate bead vials and vortex just prior to adding to bead mix bottle according to protocol. Agitate bead mix intermittently in reservoir while pipetting this into the plate.
	Samples cause interference due to particulate matter or viscosity	See above. Also sample probe may need to be cleaned with alcohol flush, back flush and washes; or if needed probe should be removed and sonicated.
	Probe height not adjusted correctly	When reading the assay on Luminex® 200™, adjust probe height to the kit solid plate or to the recommended EMD Millipore filter plates using 3 alignment discs. When reading the assay on MAGPIX®, adjust probe height to the kit solid plate or to the recommended EMD Millipore filter plates using 2 alignment discs. When reading the assay on FLEXMAP 3D®, adjust probe height to the kit solid plate using 1 alignment disc. For FLEXMAP 3D® when using the solid plate in the kit, the final suspension should be in 150 µL and 75 µl should be aspirated.
Background is too high	Background wells were contaminated	Avoid cross-well contamination by using sealer appropriately, and pipetting with multichannel pipettes without touching reagent in plate.
	Insufficient washes	Increase number of washes.
Beads not in region or gate	Luminex® instrument not calibrated correctly or recently	Calibrate Luminex® instrument based on manufacturer's instructions, at least once a week or if temperature has changed by >3°C.
	Gate settings not adjusted correctly	Some Luminex® instruments (e.g. Bio-Plex®) require different gate settings than those described in the kit protocol. Use instrument default settings.
	Wrong bead regions in protocol template	Check kit protocol for correct bead regions or analyte selection.
	Incorrect sample type used	Samples containing organic solvents or if highly viscous should be diluted or dialyzed as required.
	Instrument not washed or primed	Prime the Luminex® instrument 4 times to rid it of air bubbles, wash 4 times with sheath fluid or water if there is any remnant alcohol or sanitizing liquid.
	Beads were exposed to light	Keep plate and bead mix covered with dark lid or aluminum foil during all incubation steps.

Problem	Probable Cause	Solution
Signal for whole plate is same as background	<p>Incorrect or no Detection Antibody was added</p> <p>Streptavidin-Phycoerythrin was not added</p>	<p>Add appropriate Detection Antibody and continue.</p> <p>Add Streptavidin-Phycoerythrin according to protocol. If Detection Antibody has already been removed, sensitivity may be low.</p>
Signals too high	<p>Calibration target value set too high</p> <p>Plate incubation was too long with samples</p>	<p>With some Luminex® instruments (e.g. Bio-Plex®) default target setting for RP1 calibrator is set at high PMT. Use low target value for calibration and reanalyze plate.</p> <p>Use shorter incubation time.</p>
Sample readings are out of range	Samples contain no or below detectable levels of analyte	If below detectable levels, it may be possible to use higher sample volume. Check with technical support for appropriate protocol modifications.
High variation in samples	<p>Multichannel pipette may not be calibrated</p> <p>Plate washing was not uniform</p> <p>Samples may have high particulate matter or other interfering substances</p> <p>Plate agitation was insufficient</p> <p>Cross-well contamination</p>	<p>Calibrate pipettes.</p> <p>Confirm all reagents are removed completely in all wash steps.</p> <p>See above.</p> <p>Plate should be agitated during all incubation steps using an orbital plate shaker at a speed where beads are in constant motion without causing splashing.</p> <p>Check when reusing plate sealer that no reagent has touched sealer. Care should be taken when using same pipette tips that are used for reagent additions and that pipette tip does not touch reagent in plate.</p>

REPLACEMENT REAGENTS

MILLIPLEX [®] MAP 6-plex Ras-Raf Oncoprotein Panel, Magnetic Beads (20X)	42-684MAG
MILLIPLEX [®] MAP 6-plex Ras-Raf Oncoprotein Panel, Biotin (20X) (Detection Antibody)	44-684KMG
MILLIPLEX [®] MAP Lysis Buffer	43-040
MILLIPLEX [®] MAP Assay Buffer 2	43-041
MILLIPLEX [®] MAP COR-L23 Cell Lysate: Serum	47-318
MILLIPLEX [®] MAP THP-1 Cell Lysate: Serum	47-246
MILLIPLEX [®] MAP Streptavidin-Phycoerythrin	45-001H
MILLIPLEX [®] MAP Amplification Buffer (1X)	43-024A
Set of two MILLIPLEX [®] MAP 96-well Plates with sealers	MAG-PLATE

ORDERING INFORMATION

To place an order or to obtain additional information about our immunoassay products, please contact your Customer Service or Technical Support Specialist.

Contact information for each region can be found on our website:

emdmillipore.com/contact

Conditions of Sale

For Research Use Only. Not for Use in Diagnostic Procedures.

Safety Data Sheets (SDS)

Safety Data Sheets for EMD Millipore products may be downloaded through our website at emdmillipore.com/msds.

WELL MAP

	1	2	3	4	5	6	7	8	9	10	11	12
A	Assay Buffer 2 Blank	Sample 2										
B	Assay Buffer 2 Blank	Sample 2										
C	COR-L23: Serum control	Sample 3										
D	COR-L23: Serum control	Sample 3										
E	THP-1: Serum control	Sample 4										
F	THP-1: Serum control	Sample 4										
G	Sample 1	Etc.										
H	Sample 1	Etc.										