



Cytokeratin High MW, IHC-Paraffin Staining Report

Target Antigen:	Cytokeratin (34βE12) Monoclonal Antibody
Catalog or ID #:	IHC2029
Host and Isotype:	Mouse IgG1
Clone	34βE12
Purity and Method:	Purified immunoglobulin
Concentration and Quantity:	Prediluted
Storage Conditions:	2-4.0°C refrigerated
Species Reactivity:	Human. Reactivity with other species has not been determined
IHC-Paraffin Fixation Tested:	10% neutral Buffered Formalin
IHC-Paraffin Titer:	N/A
IHC-Paraffin Pretreatment(s):	Heat Induced Epitope Retrieval (HIER): Recommend EDTA, pH 8.0 or Citrate Buffer, pH 6.0. Over staining or no staining occurred with TE Buffer, pH 9.0 and no HIER, respectively.
IHC-Paraffin Protocol:	IHC-Select, HRP-DAB (Brief Outline): Blocking Reagent for 5 min. Primary Antibody (or Negative Control Reagent) for 10 min. Biotinylated Secondary Antibody for 10 min. Streptavidin-HRP for 10 min. DAB for 10 min. Hematoxylin for 1 min.
Positive Tissue(s):	Reactive to squamous and Ductal epithelium and stains carcinomas, recognizes Cytokeratin: 1, 5, 10 and 14, which are found in complex epithelial tissues.
Subcellular Location(s):	Cytoplasmic staining
Negative Tissue(s):	Non-epithelial origin tissue
Comments and References:	Staining is as expected since it is immunoreactive in the plasma membrane of basal layer epithelium.



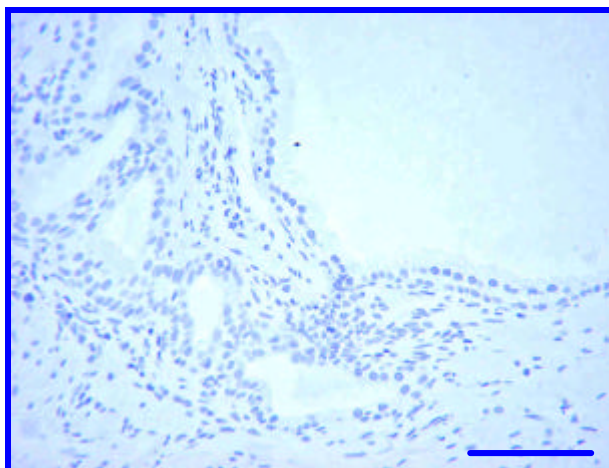
CHEMICON
INTERNATIONAL

IHC – Paraffin Staining Examples:

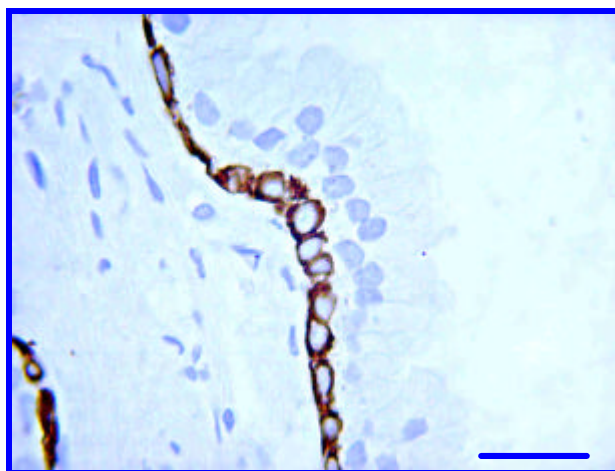
Pictures of Optimal Staining With EDTA Epitope Retrieval: Prostate Carcinoma



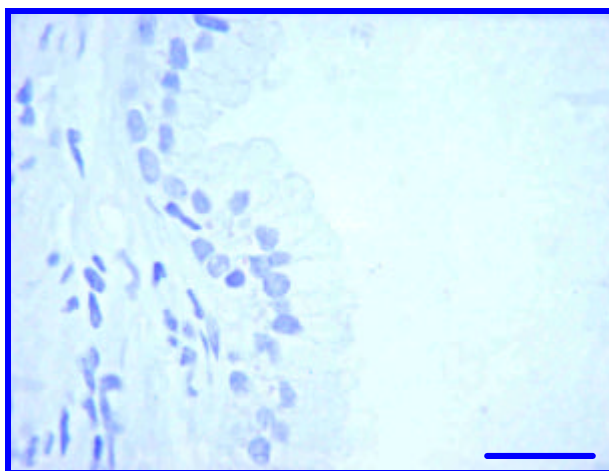
Cytokeratin (IHC2029, Clone: 34βE12) staining of Human Prostate Carcinoma. Tissue pretreated with EDTA, pH 8.0, prediluted antibody, IHC-Select Detection with HRP-DAB. Basal epithelium strongly immunoreactive (brown). Bar = 100μm.



Negative Control staining of Human Colorectal Carcinoma. Tissue pretreated with EDTA, pH 8.0, Negative Control Reagent, IHC-Select Detection with HRP-DAB. No background staining is detected. Bar = 100μm.



Cytokeratin (IHC2029, Clone: 34βE12) staining of Human Prostate Carcinoma. Tissue pretreated with EDTA, pH 8.0, prediluted antibody, IHC-Select Detection with HRP-DAB. Basal epithelium strongly immunoreactive (brown). Bar = 25μm.



Negative Control staining of Human Colorectal Carcinoma. Tissue pretreated with EDTA, pH 8.0, Negative Control Reagent, IHC-Select Detection with HRP-DAB. No background staining is detected. Bar = 25μm.



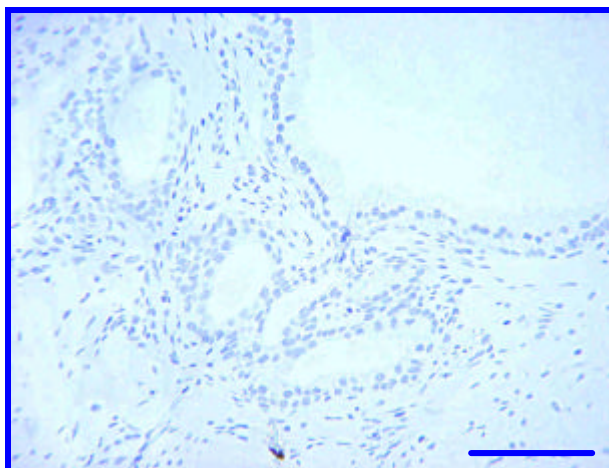
CHEMICON
INTERNATIONAL

IHC – Paraffin Staining Examples:

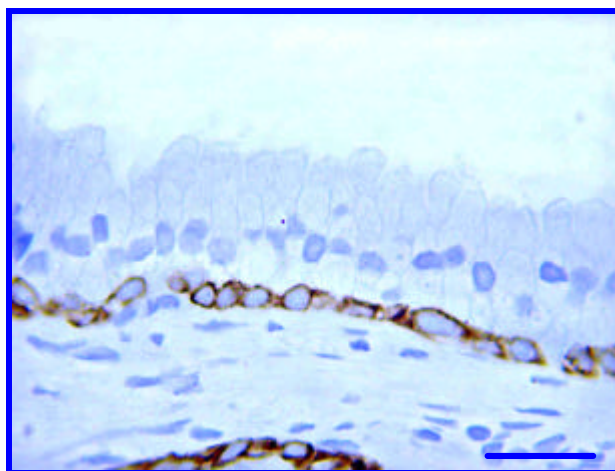
Pictures of Optimal Staining With Citrate Buffer Epitope Retrieval: Prostate Carcinoma



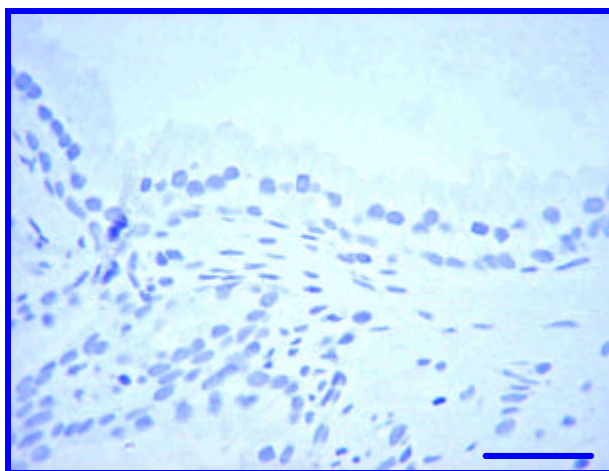
Cytokeratin (IHC2029, Clone: 34βE12) staining of Human Prostate Carcinoma. Tissue pretreated with Citrate Buffer, pH 6.0, prediluted antibody, IHC-Select Detection with HRP-DAB. Basal epithelium strongly immunoreactive (brown). Bar = 100μm.



Negative Control staining of Human Colorectal Carcinoma. Tissue pretreated with Citrate Buffer, pH 6.0, Negative Control Reagent, IHC-Select Detection with HRP-DAB. No background staining is detected. Bar = 100μm.



Cytokeratin (IHC2029, Clone: 34βE12) staining of Human Prostate Carcinoma. Tissue pretreated with Citrate Buffer, pH 6.0, prediluted antibody, IHC-Select Detection with HRP-DAB. Basal epithelium strongly immunoreactive (brown). Bar = 25μm.



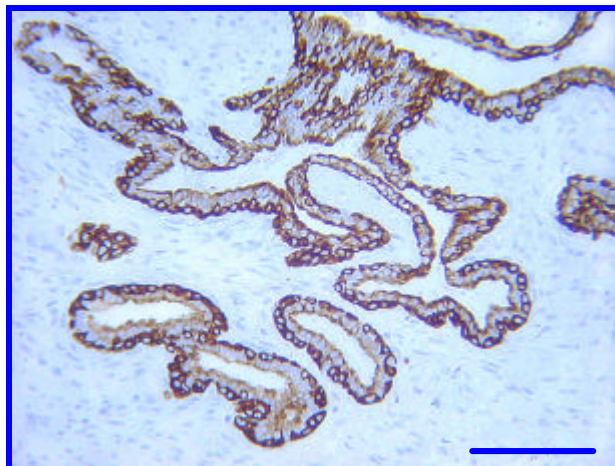
Negative Control staining of Human Colorectal Carcinoma. Tissue pretreated with Citrate Buffer, pH 6.0, Negative Control Reagent, IHC-Select Detection with HRP-DAB. No background staining is detected. Bar = 25μm.



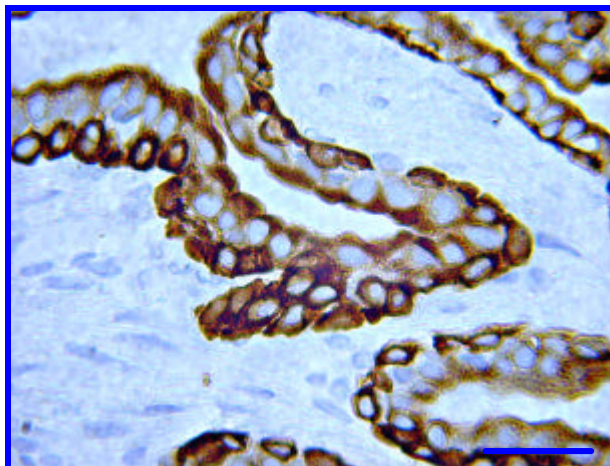
CHEMICON
INTERNATIONAL

IHC – Paraffin Staining Examples:

Pictures of Over Staining With TE Buffer Epitope Retrieval: Prostate Carcinoma

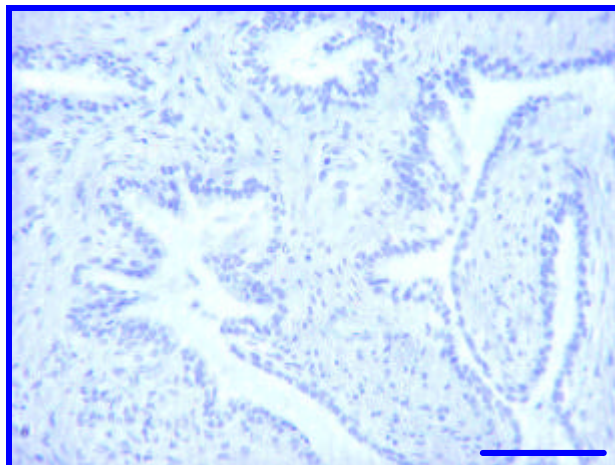


Cytokeratin (IHC2029, Clone 34βE12) staining of Human Prostate Carcinoma. Tissue pretreated with TE Buffer, pH 9.0, prediluted antibody, IHC-Select Detection with HRP-DAB. Note that both basal epithelium and epithelial layer are strongly immunoreactive (brown). Bar = 100μm.

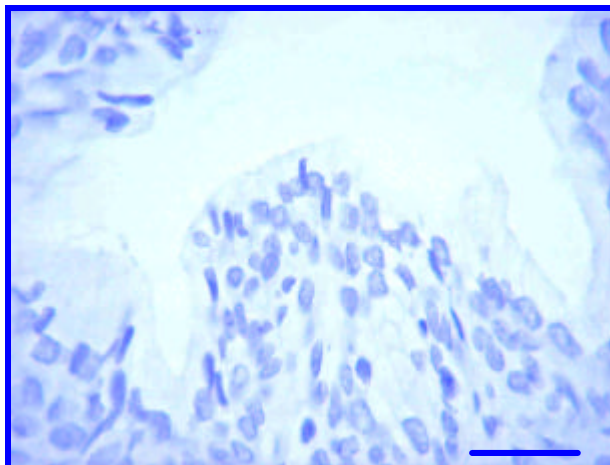


Cytokeratin (IHC2029, Clone 34βE12) staining of Human Prostate Carcinoma. Tissue pretreated with TE Buffer, pH 9.0, prediluted antibody, IHC-Select Detection with HRP-DAB. Note that both basal epithelium and epithelial layer are strongly immunoreactive (brown). Bar = 25μm.

Pictures of Staining Without Epitope Retrieval: Prostate Carcinoma



Cytokeratin (IHC2029, Clone 34βE12) staining of Human Prostate Carcinoma. Tissue without Epitope retrieval. Prediluted antibody, IHC-Select Detection with HRP-DAB. No signal detected. Bar = 100μm.



Cytokeratin (IHC2029, Clone 34βE12) staining of Human Prostate Carcinoma. Tissue without Epitope retrieval. Prediluted antibody, IHC-Select Detection with HRP-DAB. No signal detected. Bar = 25μm.