

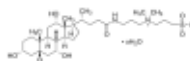
3050 Spruce Street, Saint Louis, MO 63103, USA

Website: www.sigmaaldrich.comEmail USA: techserv@sial.comOutside USA: eurtechserv@sial.com

Product Specification

Product Name:
CHAPS hydrate - BioXtra, ≥98% (TLC)

Product Number: **C5070**
 CAS Number: 331717-45-4
 MDL: MFCD00012116
 Formula: C₃₂H₅₈N₂O₇S · xH₂O
 Formula Weight: 614.88 g/mol



TEST	Specification
Appearance (Color)	White
Appearance (Form)	Powder
Solubility (Color)	Colorless
Solubility (Turbidity)	Clear
0.1 M, H ₂ O	
Water (by Karl Fischer)	≤ 8 %
Solvent Content (by GC)	< 0.04 %
Dimethylformamide	
Infrared spectrum	Conforms to Structure
Chloride Content	≤ 0.05 %
Residue on ignition (Ash)	≤ 0.1 %
Insoluble matter	≤ 0.1 %
Aluminum (AL)	≤ 0.0005 %
Phosphorus (P)	≤ 0.001 %
Lead (Pb)	≤ 0.001 %
Ammonia (NH ₄)	≤ 0.05 %
Copper (Cu)	≤ 0.0005 %
Iron (Fe)	≤ 0.0005 %
Zinc (Zn)	≤ 0.0005 %
Calcium (Ca)	≤ 0.0005 %
Magnesium (Mg)	≤ 0.0005 %
Sodium (Na)	≤ 0.005 %
Potassium (K)	≤ 0.005 %
Purity (TLC)	≥ 98 %

Sigma-Aldrich warrants, that at the time of the quality release or subsequent retest date this product conformed to the information contained in this publication. The current Specification sheet may be available at Sigma-Aldrich.com. For further inquiries, please contact Technical Service. Purchaser must determine the suitability of the product for its particular use. See reverse side of invoice or packing slip for additional terms and conditions of sale.



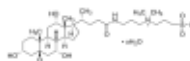
3050 Spruce Street, Saint Louis, MO 63103, USA

Website: www.sigmaaldrich.comEmail USA: techserv@sial.comOutside USA: eurtechserv@sial.com

Product Specification

Product Name:
CHAPS hydrate - BioXtra, ≥98% (TLC)

Product Number: **C5070**
CAS Number: 331717-45-4
MDL: MFCD00012116
Formula: C₃₂H₅₈N₂O₇S · xH₂O
Formula Weight: 614.88 g/mol



TEST	Specification
------	---------------

Recommended Retest Period	-----
4 years	

Specification: PRD.3.ZQ5.10000007877

Sigma-Aldrich warrants, that at the time of the quality release or subsequent retest date this product conformed to the information contained in this publication. The current Specification sheet may be available at Sigma-Aldrich.com. For further inquiries, please contact Technical Service. Purchaser must determine the suitability of the product for its particular use. See reverse side of invoice or packing slip for additional terms and conditions of sale.

